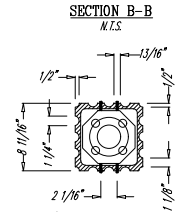
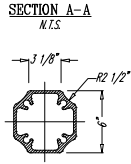
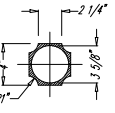
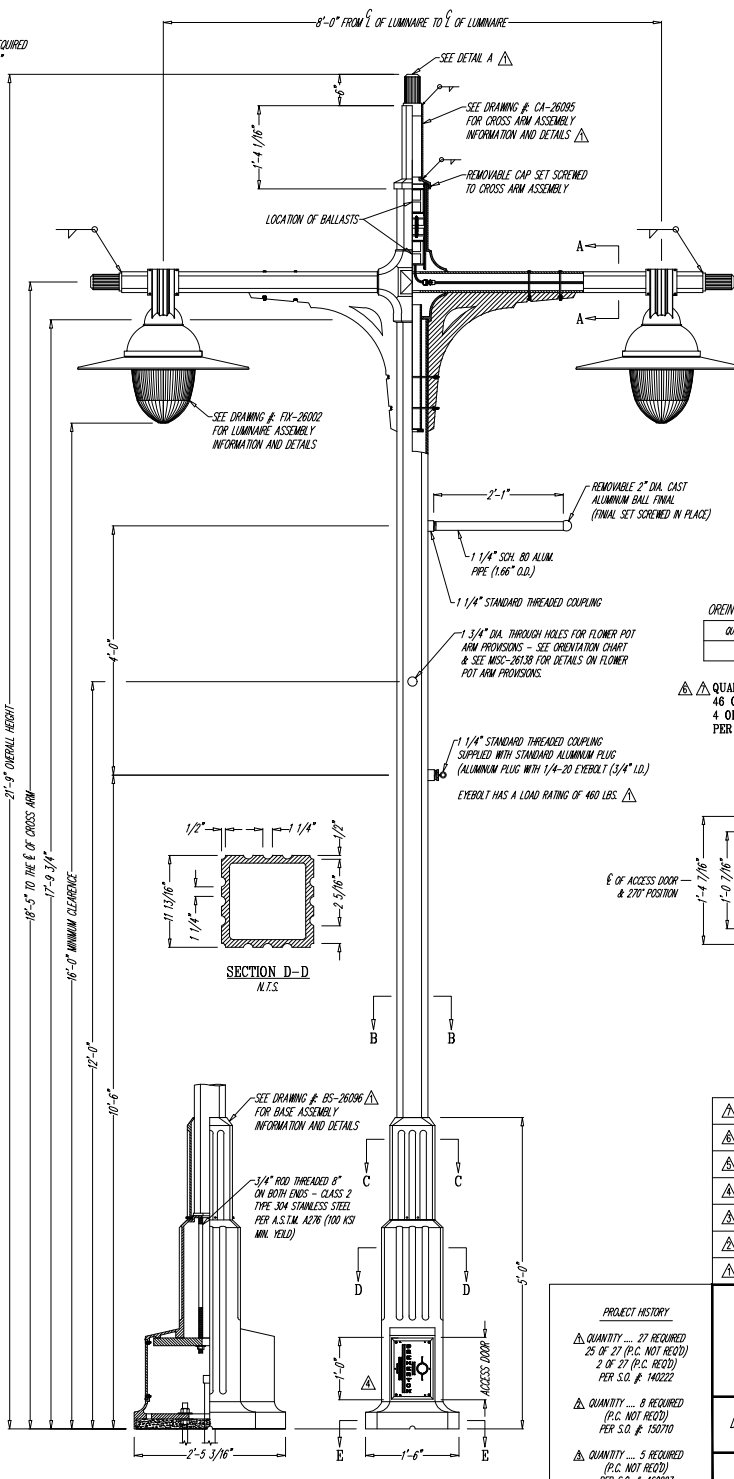




DETAIL A
 DETAIL OF OPTIONAL PHOTO CONTROL
 PHOTO CELL TO REPLACE CROSS ARM FINAL WHEN REQUIRED
 ALL PHOTO CELL ARMS TO BE MARKED "TYPE P"
 N.T.S.



SECTION C-C
 SEE DRAWING # BS-2606
 FOR BASE CAP ASSEMBLY
 INFORMATION AND DETAILS
 N.T.S.



LUMINAIRE SPECIFICATIONS

STYLE: HUDSON RIVER PARK PEDESTRIAN
 HEIGHT: 29 3/4"
 WIDTH: 33" DIA.
 MATERIAL: CAST AND SPUN ALUMINUM
 COLORES: RETRACTIVE POLYCARBONATE
 FINISH: PRIME PAINT THEN FINISH PAINT, SHEFFIN WILLIAMS ACROLOK - LONG BEACH BLUE (RAL 5011)
 LAMPING: 100 WATT HIGH PRESSURE SODIUM (LAMP BY OTHERS)
 VOLTAGE: Δ QUAD WIRED AT 240 VOLT
 SOCKET: MEDIUM BASE
 DISTRIBUTION: TYPE III (ASYMMETRIC DISTRIBUTION)
 PHOTO CONTROL: OPTIONAL TWIST LOCK PHOTO CELL

CROSS ARM SPECIFICATIONS

STYLE: HUDSON RIVER PARK ROADWAY TWIN
 HEIGHT: 47 3/4"
 WIDTH: Δ 8'-0" FROM \bar{C} OF LUMINAIRE TO \bar{C} OF LUMINAIRE
 MATERIAL: CAST ALUMINUM
 FINISH: PRIME PAINT THEN FINISH PAINT, SHEFFIN WILLIAMS ACROLOK - LONG BEACH BLUE (RAL 5011)

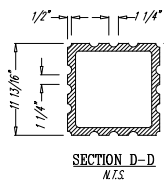
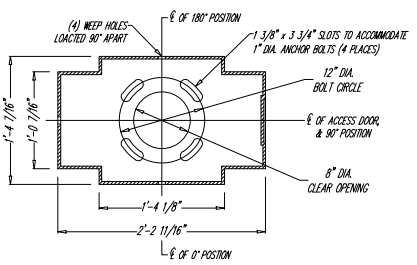
LAMP POST SPECIFICATIONS

STYLE: HUDSON RIVER PARK
 HEIGHT: Δ 17'-9 3/4"
 BASE: 18" X 29 3/16"
 MATERIAL: EXTRUDED 6063-T6 ALUMINUM SHAFT
 SHAFT: 1 PIECE HEAVY WALL CAST DUCTILE IRON
 BASE: PER A.S.T.M. A 536-84 GRADE 65-45-12
 FINISH: PRIME PAINT THEN FINISH PAINT, SHEFFIN WILLIAMS ACROLOK - LONG BEACH BLUE (RAL 5011)
 ACCESS DOORS: (2) LOCATED IN BASE SECURED WITH CAPTIVE TAMPER PROOF HEX SOCKET SECURITY MACHINE SCREWS
 GROUND STUD PROVISIONS: DRILL AND TAP INSIDE WALL OF BASE TO ACCOMMODATE A 1/4"-20 GROUND STUD
 ANCHOR BOLTS: 1" DIA. ANCHOR BOLTS 5" REQUIRED
 BOLT PROTECTION: PLEASE NOTE:
 1. ALL HARDWARE SHALL BE STAINLESS STEEL
 2. ALL VISIBLE HARDWARE SHALL BE FINISH PAINTED TO MATCH POST COLOR

ORIENTATION SPECIFICATIONS Δ Δ

QUANTITY	BANNER ARM & EYEBOLT POSITION	CROSS ARM POSITION	FLOWER POT ARM POSITION
50	0°	0° / 180°	90° / 270°

Δ Δ QUANTITY 50 COMPLETE UNITS REQUIRED
 46 OF 50 REQUIRED WITH STANDARD FINAL
 4 OF 50 REQUIRED WITH OPTIONAL PHOTO CONTROL
 PER S.O. #: 170281



Δ REVISED BY: B.K.R.	DATE: 08-09-07
Δ REVISED BY: B.K.R.	DATE: 06-18-07
Δ REVISED BY: B.K.R.	DATE: 09-06-06
Δ REVISED BY: B.K.R.	DATE: 07-06-06
Δ REVISED BY: B.K.R.	DATE: 05-12-06
Δ REVISED BY: B.K.R.	DATE: 02-28-06
Δ REVISED BY: B.K.R.	DATE: 05-03-04

PROJECT HISTORY

Δ QUANTITY ... 27 REQUIRED
 25 OF 27 (P.C. NOT RECD)
 2 OF 27 (P.C. RECD)
 PER S.O. #: 140222

Δ QUANTITY ... 8 REQUIRED
 (P.C. NOT RECD)
 PER S.O. #: 150710

Δ QUANTITY ... 5 REQUIRED
 (P.C. NOT RECD)
 PER S.O. #: 160227

Δ QUANTITY ... 2 REQUIRED
 (P.C. NOT RECD)
 PER S.O. #: 160488

DESCRIPTION	
CUSTOMER	Δ CITY OF BREMERTON, WA
JOB	Δ BREMERTON PED/BYC ACCESS
SCALE	N.T.S.
DRAWN BY:	B.K.R.
DATE	01-10-04
DRAWING NO.	LP-26097



City of Bremerton

PUBLIC WORKS

ENGINEERING DIVISION

**CENTRAL BUSINESS DISTRICT
 DOUBLE FIXTURE LIGHT STANDARD**

7022

Revision Date
 3/09/16