

BIKE LANE DELINEATOR SAMPLE

FLEXIBLE PLASTIC POST

BENEFITS

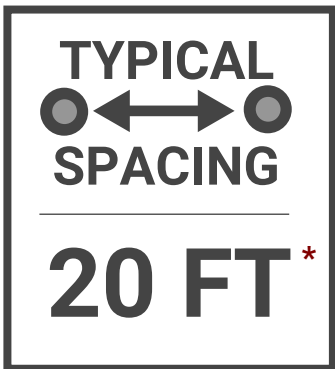
- Lowest Cost Vertical Delineator
- High Visibility 36" Height
- Flexible / Non-Rigid Construction
- Reflective Post Bands

**FEDERALLY
APPROVED
FOR USE**

CONSIDERATIONS

- Low Durability
- Requires Routine Replacement
- Not Mountable by Vehicles¹

¹ Vertical delineators which impair the ability for vehicles to pull to the curb at critical locations during emergency response are currently not supported by the Bremerton Fire Department



* Spacing may vary depending on location and street context



6th Street Active Transportation Improvement Project
September 2025
Public Works & Utilities - Engineering Division

BIKE LANE DELINEATOR SAMPLE

CYCLE LANE

BENEFITS

- Two-Sided Profile Design
- Durable Rubber Construction
- 100% Recycled Material
- Non-Complex Installation



CONSIDERATIONS

- High Cost
- Low Height (4")
- Requires Closer Spacing
- Not Mountable by Vehicles¹
- No Reflectivity on Delineator Ends

**NOT
FEDERALLY
APPROVED
FOR USE²**

¹ Vertical delineators which impair the ability for vehicles to pull to the curb at critical locations during emergency response are currently not supported by the Bremerton Fire Department

TYPICAL
SPACING

10 FT*

\$\$\$ COST \$\$\$

\$\$

MID-RANGE COST

² Use of non-federally approved delineators is subject to further review by the City.

* Spacing may vary depending on location and street context



6th Street Active Transportation Improvement Project
September 2025
Public Works & Utilities - Engineering Division

BIKE LANE DELINEATOR SAMPLE

ZEBRA DELINEATORS

BENEFITS

- Domed Profile Designs
- Durable Construction
- 100% Recycled Material
- Non-Complex Installation
- Integrated Reflective Bands

**NOT
FEDERALLY
APPROVED
FOR USE²**

CONSIDERATIONS

- High Cost
- Low Height
- Requires Closer Spacing
- Vehicle Mountable Option (Zebra 5)¹



¹ Vertical delineators which impair the ability for vehicles to pull to the curb at critical locations during emergency response are currently not supported by the Bremerton Fire Department

TYPICAL
SPACING

10 FT*

\$\$\$ COST \$\$\$

\$\$

MID-RANGE COST

² Use of non-federally approved delineators is subject to further review by the City.

* Spacing may vary depending on location and street context



BIKE LANE DELINEATOR SAMPLE

3" HIGH BIKE DELINEATORS

BENEFITS

- Domed Low-Profile Design
- Durable Rubber Construction
- 100% Recycled Material
- Non-Complex Installation
- Integrated Reflectors (Side & Ends)

**NOT
FEDERALLY
APPROVED
FOR USE²**

CONSIDERATIONS

- High Cost
- Low Height (3")
- Requires Closer Spacing
- Mountable by Large Vehicles¹



¹ Vertical delineators which impair the ability for vehicles to pull to the curb at critical locations during emergency response are currently not supported by the Bremerton Fire Department

**TYPICAL
SPACING**

10 FT*

\$\$\$ COST \$\$\$

**\$\$\$
HIGH COST**

² Use of non-federally approved delineators is subject to further review by the City.

* Spacing may vary depending on location and street context



BIKE LANE DELINEATOR SAMPLE

5" HIGH BIKE DELINEATORS

BENEFITS

- Two-Sided Profile Design
- Durable Rubber Construction
- 100% Recycled Material
- Non-Complex Installation
- Integrated Reflectors (Side & Ends)

**NOT
FEDERALLY
APPROVED
FOR USE²**


CONSIDERATIONS

- High Cost
- Low Height (5")
- Requires Closer Spacing
- Not Mountable by Vehicles¹



¹ Vertical delineators which impair the ability for vehicles to pull to the curb at critical locations during emergency response are currently not supported by the Bremerton Fire Department

**TYPICAL
SPACING**



10 FT*

\$\$\$ COST \$\$\$

\$\$\$

HIGH COST

² Use of non-federally approved delineators is subject to further review by the City.

* Spacing may vary depending on location and street context



BIKE LANE DELINEATOR SAMPLE

TUFF CURB XLP



BENEFITS

- Curb Increases Visibility / Separation
- Durable Construction
- Posts Can be Replaced Without Removing Curb
- High Visibility 40" Height
- Low Profile Curb Design
- Post and Curb Reflectivity

CONSIDERATIONS

- High Cost
- Not Mountable by Vehicles¹

¹Vertical delineators which impair the ability for vehicles to pull to the curb at critical locations during emergency response are currently not supported by the Bremerton Fire Department

**FEDERALLY
APPROVED
FOR USE**

TYPICAL
←→
SPACING

20 FT*

\$\$\$ COST \$\$\$

\$\$\$\$
VERY HIGH COST

* Spacing may vary depending on location and street context



6th Street Active Transportation Improvement Project
September 2025
Public Works & Utilities - Engineering Division

OTHER BIKE LANE DELINEATORS

RAISED PAVEMENT MARKERS

BENEFITS

- Low Cost
- Simple Adhesive Installation
- Allows Vehicles to Pull to Curb During Emergency Response
- Reflective Face
- Provides Tactile Separation

**FEDERALLY
APPROVED
FOR USE**

CONSIDERATIONS

- Not Considered Vertical Protection
- Requires More Annual Maintenance and Replacement

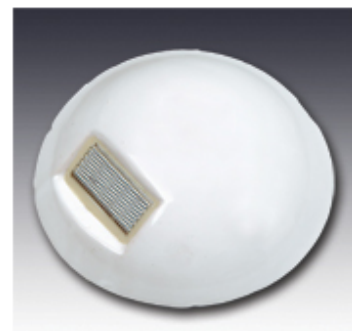


Standard Raised Pavement Marker Button
3.5" Wide x 0.625" Tall (Typical)

\$\$\$ COST \$\$\$

\$

LOW COST



Ceramic Raised Pavement Marker
6" Diameter x 1.75" Tall (Typical)

