

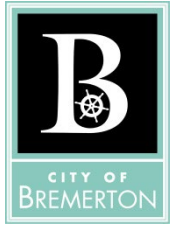


MAYOR'S REPORT  
*October 15, 2025*

**BREMERTON**  
WASHINGTON



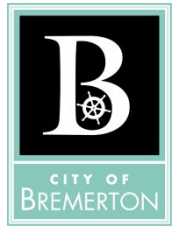
# Francis Street Outfall Improvements



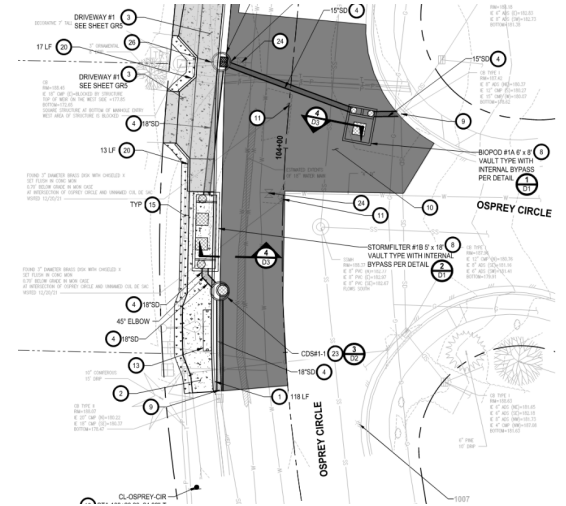
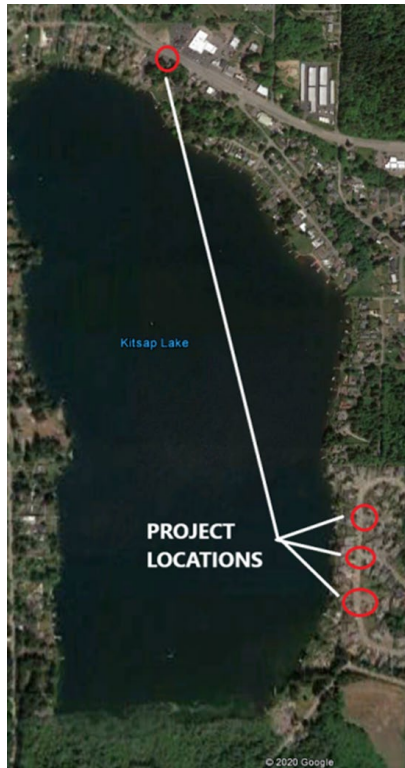
- Construction is complete!
- Project identified during the Kitsap Lake Safe Routes to Schools Project, with the existing line and outfall being undersized.
- A second existing underutilized outfall was rehabilitated.
- Included in the project was providing water quality treatment.



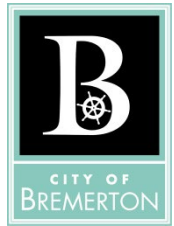
# Kitsap Lake Stormwater Retrofit



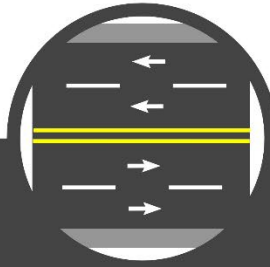
- Construction is beginning this month!
- Project will treat stormwater prior to it entering the lake.
- Contract awarded to ACI, currently waiting for delivery of the treatment vaults.



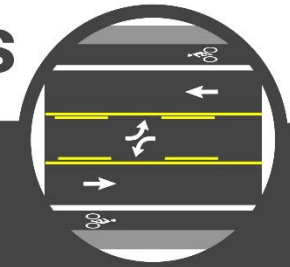
# 6<sup>th</sup> Street Active Transportation Improvement Project Updated Concept Designs & Online Project Survey



## TAKE OUR SURVEY



**The 6th Street Corridor is  
Changing to Improve Safety  
and Provide Bike Lanes**



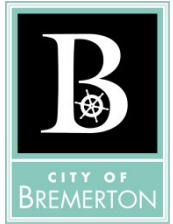
**View concept plans and provide  
feedback by taking a brief  
online survey by October 26**



[www.bremertonwa.gov/6thStreetProject](http://www.bremertonwa.gov/6thStreetProject)

**6th Street Active Transportation Improvements**

# Kitsap Lake Park Improvement Update



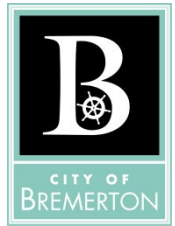
## Picnic Shelter

Newly built picnic shelter has now been fully stained and finished as part of Kitsap Lake Park improvement project. Picnic tables will be assembled and put in place underneath the shelter this week!



*Photo taken October 14, 2025*

# Kitsap Lake Park Improvement Update



## New Playground Design - Public Survey

Several design proposals have been received for the Kitsap Lake Park playground.

The public will be invited to vote for their favorite design in an online survey through the end of October! Parks and Recreation is working on launching the survey link on the City's website and promoting via social media for the public to participate.

The Parks and Recreation Commission will review design proposals and public input at their Nov. 4, 2025 meeting and make recommendations for a playground design concept.

Design and manufacturing of the playground is planned over the winter with a community build at the park anticipated for Spring 2026!



Above images are concepts from the online playground design survey.

# Bremerton Fire Update

## Additional Response Unit and Fire Boat

- Bremerton Fire rolled out a new additional response unit to serve City residents on October 13
- This response unit is filling areas of demand for all emergencies in the community
- Bremerton voters approved a measure to increase levy funding for Bremerton Fire in 2024 for staff and equipment, including new response unit
- New unit increases total number of EMS units to four, department staffing has increased from 14 to 16
- New fire/rescue boat also being built by Safe Boats and coming online in early 2026 to support rescue and fire-fighting capabilities; paid for by federal Port Security Grant funding



# Gorst Creek Restoration Project

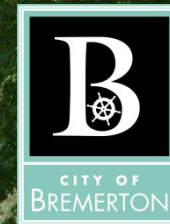
The City of Bremerton is partnering with Suquamish Tribe to improve fish passage, stream and channel conditions, and floodplain habitat

Project is located at the Gorst Creek Rearing Facility on land owned by the City of Bremerton and operated by Suquamish Tribe

Project goals include:

- Removal or improvement of 2 fish passage barriers
- Removal of concrete channels and artificial backfill
- Creation of a more natural and sinuous channel path
- Habitat restoration through invasive removal and native vegetation replanting

Suquamish Tribe contributing \$375,000 to feasibility/preliminary design. Through a Council-approved interlocal agreement, the City is contributing \$70,000 of stormwater funds and stormwater staff time to assist in design/feasibility.



# THE SALMON ARE COMING!

Saturday, November 1, 2025 | 11 am - 3 pm

SALMON TOURS 2025

Celebrate the kickoff of salmon returning to Kitsap streams at these FREE events



**MERLE HAYES SALMON ENHANCEMENT CENTER**  
23175 Indianola Rd NE, Poulsbo

**POULSBO'S FISH PARK**  
288 NW Lindvig Way, Poulsbo

**CLEAR CREEK TRAIL RIDGETOP OBSERVATION DECK**  
9228 Ridgetop Blvd., Silverdale

**KETA LEGACY FOUNDATION RHODODENDRON PRESERVE**  
2401 Seabeck Highway, Bremerton

**CHICO CREEK ESTUARY**  
4270 Kittyhawk Drive, Bremerton

**CHICO SALMON PARK**  
3150 Chico Way NW, Bremerton

**SALMON HAVEN AT DICKERSON CREEK**  
Northlake Way NW and Taylor Road, Bremerton



**JARSTAD PARK**  
4230 W. Belfair Valley Road, Gorst

Event Brought to you by: City of Bremerton, Chico Salmon Park Stewardship Group, Clean Water Kitsap, Great Peninsula Conservancy, Hood Canal Salmon Enhancement Group, Keta Legacy Foundation, Kitsap Conservation District, Kitsap County, Kitsap Poggie Club, Kitsap PUD, Kitsap Regional Library, Mid Sound Fisheries Enhancement Group, Port Gamble S'Klallam Tribe, City of Poulsbo, Suquamish Tribe, Washington Dept. of Fish and Wildlife, Washington Sea Grant, and WSU Extension



For more information and other possible viewing dates: [KitsapSalmonTours.org](https://KitsapSalmonTours.org), 360.228.7303

WSU Extension programs and employment are available to all without discrimination. Evidence of noncompliance may be reported through your local WSU Extension office. Reasonable accommodations will be made for persons with disabilities and special needs who contact Anna McClelland in advance at 345 6th Street, Suite 550, Bremerton, WA 98337, [anna.mcclelland@wsu.edu](mailto:anna.mcclelland@wsu.edu)

7415 (08/25)

