



# 2026 State of the City

## Mayor Greg Wheeler



## Supporting Healthcare Capacity and Access



## Peninsula Community Health Services Respite Facility

### 810 6th Street

- Rehabilitation of an existing two-story structure to create a 15,800 square foot facility in Downtown Bremerton.
- Includes 24 respite living units, medical clinic, training rooms, and office space
- Plans contain a 2,300 square foot rooftop deck amenity area, new parking area, and landscaping
- Anticipated Occupancy: July 2026



## New Healthcare Facilities Opened

### CHI/Virginia Mason Free Standing ER/Urgent Care - Opened in March 2025

- On Kitsap Way – 24/7 emergency room, exam rooms, on-site labs, and on-site services such as CT scans, X-rays and ultrasounds
- Urgent care services provided seven days a week between 7 a.m. to 9 p.m.

### MultiCare Emergency Room - Opened in June 2025

- Open 24/7; staffed by board-certified emergency physicians
- Offers multiple patient rooms, observation rooms, and on-site services such as X-ray, ultrasound, and CT scans



## New Healthcare Facilities

### St Michael Medical Center North Tower in Silverdale – Opened December 2025

- The north tower at St. Michael expands capacity to 74 beds to serve Bremerton and regional residents
- New capacity will support growth for specialties such as spine surgery, orthopedics, OB-GYN, cardiology, gastroenterology, and cancer care, among others.

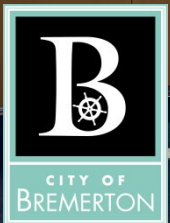
### Healthcare Expansion

- Virginia Mason has provided \$2.5 million to support Olympic College's Healthcare Expansion Project and new Poulsbo campus to support local workforce development and recruitment

# Bremerton Fire Update

## Additional Response Unit and Fire Boat

- Bremerton Fire rolled out a new additional response unit to serve City residents in October 2025
- Bremerton voters approved a measure to increase levy funding for Bremerton Fire in 2024 for staff and equipment; all projects supported by the levy have been accomplished
- New unit increased total number of EMS units to four; minimum daily staffing increased from 14 to 16
- New fire/rescue boat also being built by Safe Boats and will be delivered mid-March; anticipated to be in service by end of April. New boat will support rescue and fire-fighting capabilities; paid for by federal Port Security Grant funding





## Supporting New Housing and Economic Growth



## Bremerton FIFA Fan Zone

**We are excited City of Bremerton was named an official Fan Zone – and the City and our partners have been preparing. To date:**

- Downtown Bremerton Association is activating our Fan Zone for all 6 Seattle matches, plus two additional USA matches
- Games will be shown live on a 20-foot outdoor screen in the heart of Quincy Square with vendors, food trucks, and activities rounding out the festive events to create a unique World Cup experience right here in Bremerton
- City has created a short-term permit program to allow pop-up shops in downtown
- City has added focus to downtown appearance – including landscaping, and repainting railing and light poles at the boardwalk
- Extensive preparations for safety and security during events

# DEVELOPMENT PROJECTS

## Wheaton Way Corridor and Harrison Heights

### In Review, Under Construction or Granted Occupancy

- 971 residential units
- 773,000 square feet of commercial space, including 130,000 sq feet for two new schools – View Ridge and Armin Jahr



In review, in permitting or under development - residential and commercial



Fully constructed residential projects



# DEVELOPMENT PROJECTS



## Wheaton Way

**Broadmoor Commons - 33 units (11 triplexes) - project fully constructed**

**Located Constellation Loop, off Wheaton Way corridor**



# DEVELOPMENT PROJECTS

## Harrison Heights

**Clare Townhomes** – 16 townhome units (fully completed)





## ***DEVELOPMENT PROJECTS***

### **Blue Ridge Apartments - (Riddell/Almira)**

- Phase 1 – 193 units – completed; Phase 2 – 130 units – completed  
Total: 323 apartment units & mixed use

### **Kitsap Landing – Mixed use development (Riddell)**

- 69 single family homes construction completed; 82-unit mixed use apartment complex – permit ready to issue

# DEVELOPMENT PROJECTS



## East Park

**Harbor Point Apartments** - 56-unit unit mixed use (lower Wheaton) – Anticipated occupancy in Spring 2026



# DEVELOPMENT PROJECTS



## Charleston Business District

Implementing Charleston Area-Wide Planning Study for redevelopment of district –have completed or actively working on several priorities:

- New Wycoff Mural and Outdoor Gallery – City completed prepping of wall and community volunteers painted mural in Spring 2025; City installed artist wall panels for outdoor gallery last summer.
- Puget Sound Energy (PSE) completed upgrades to lighting for Charleston District to LED
- Planters and benches placed in Charleston business district and freshened street parking markings on Callow between 11th and 6th Street with more to come
- Added a new cable to hang banners on Callow Ave to promote Charleston District events
- New wayfinding sign installed in Charleston District – other neighborhood signage for Downtown, Manette, custom maps, and signage for pedestrians were also installed around City



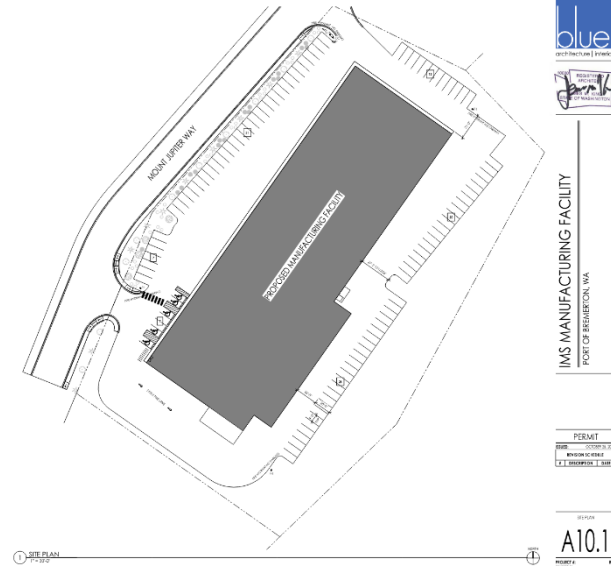
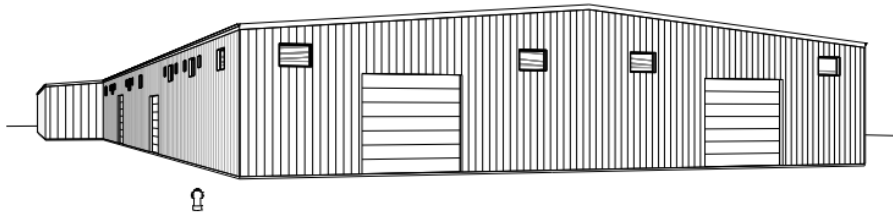


## Downtown District

### Tim Ryan Building, 555 Pacific Avenue

- Tim Ryan Properties announced signing of a long-term lease up to 10 years with Department of Navy for the office building at corner of Pacific Ave and 6th Street
- More than **600 employees** now anticipated to work at building in support of modernizing Bremerton shipyard
- Anticipated occupancy March 2026

# PORT OF BREMERTON IMS MANUFACTURING FACILITY



## Inventech Marine Solutions (IMS)

- Bremerton manufacturer builds boats for military, fire, police, and recreational use all over the world
- Constructed completed for 65,000 square foot facility at Port of Bremerton west of Bremerton airport for manufacturing and office space
- **Occupancy completed in October 2025!**
- IMS anticipated to reach up to 150 employees over next few years due to new building expansion and business growth



## USS Bremerton Memorial

- City of Bremerton partnering with the Bremerton Olympic Peninsula Council Navy League to create a memorial using the sub sail
- Continuing to coordinate with partners on proposal for new memorial
- Navy League installed sign in December 2025 to celebrate and recognize site of future USS Bremerton monument



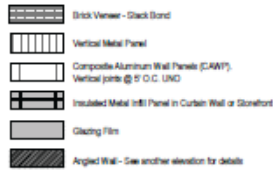
## **Supporting and Partnering on Higher Education and Training**



# Bremerton School District Update

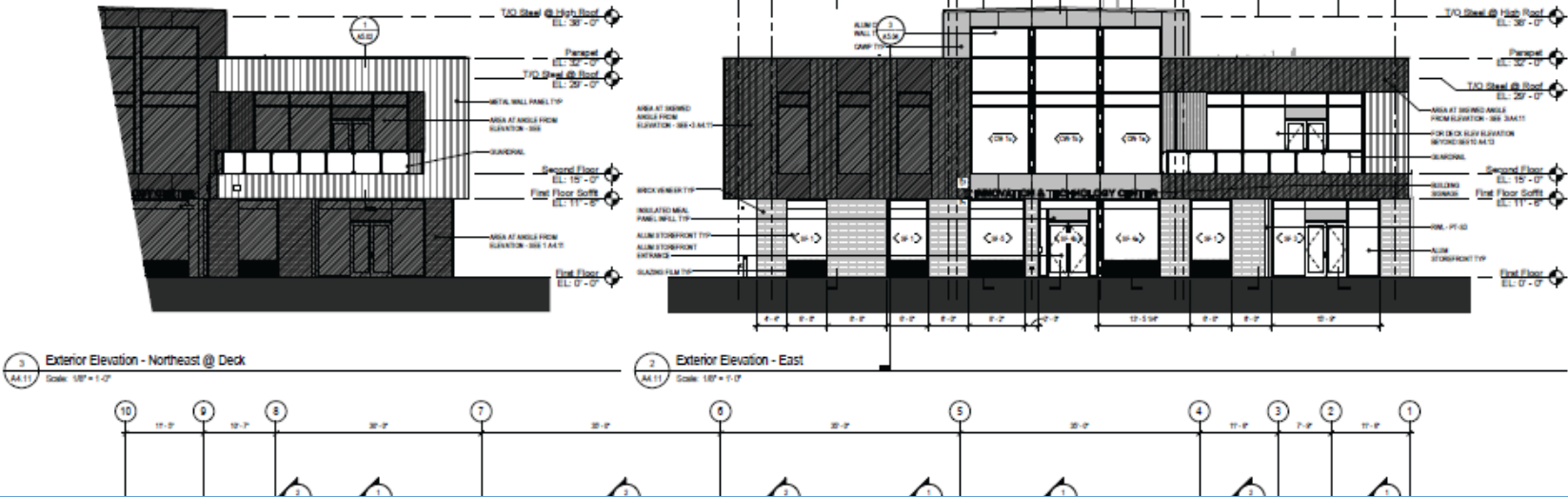
- In partnership with Bremerton School District (BSD), supporting implementation of BSD's 2024 capital bond, including replacement of Armin Jahr and View Ridge
- Building permit issued for View Ridge; Armin Jahr near permit issuance
- Site plans open for public review on Bremerton School District webpage at [www.bremertonschools.org/bond](http://www.bremertonschools.org/bond)

### Exterior Elevation Legend



### Exterior Elevation Notes

1. Install continuous sealant & backer rod vertical control joints in brick veneer where indicated by "CJ" on elevations. Unless otherwise noted (install control joints as follows):
  - 2'-0" away from all outside corners (5'-0" maximum)
  - At all inside corners
  - 25'-0" on center maximum on continuous walls
  - Wherever wall height changes or walls are supported on different levels



Innovation &

# Olympic College Innovation & Technology Center

- Olympic College (OC) recently submitted a site plan permit for a potential future two story, 31,000 sq ft building on OC Bremerton campus
- Building would be for 258 students and 23 faculty
- Plans include new facility with specialized laboratories for computer information systems, computer science, cybersecurity, digital media arts, and water flow research engineering. Design of flexible classrooms would also support hybrid, remote, and active learning.
- New adjacent parking area planned on the southern side of 15th Street
- Site plan review permit currently in review by City



## West Sound Tech - Bremerton

- WST, built in 1977, needed expansion and renovation to meet current needs and future student growth in career and technical programs; serves high school students and young adults
- 50,000 sq ft new building attached to existing WST structure – temporary occupancy for 3-D animation, Medical Careers and Cosmetology programs; 3D Animation & Gaming, Automotive Technology, Collision Repair Technology, Construction Careers, Cosmetology, Criminal Justice, Dental, Early Learning, Esthetics, Professional Medical Careers, Fire Science, Welding, and Maritime; **dedication was held for new instructional area on Tue., Feb 24**
- Modernization of existing WST building (Phase 2) – funding provided by state legislature



## Supporting Quality of Life



## Investment in the Community – Diversity and Community Engagement Manager

- Dr. Jeneise Briggs was hired as City’s Diversity and Community Engagement Manager in March 2025; she holds a Bachelor of Arts in Mass Communication, a Master of Public Administration and a Doctor of Education in Educational Leadership and Policy Analysis.
- In her role, Dr. Briggs has been focused on building partnerships with community organizations and strengthening communications efforts with internal and external stakeholders
- In 2026, she is working on piloting a Civics Academy that will strengthen civic literacy, community engagement and build a pipeline of informed residents; implementing townhall meetings for the public to engage and share input with government leaders; and fostering engagement, understanding and community participation to expand relationships between the City and the community.



## Haddon Park Renovations

- Haddon Park construction completed and now open
- Updates to the park include new exterior pathway, shelter, sport court, parking lot, exterior sidewalks connecting local neighborhood with the park, new playground, hydroseeding of field, new landscaping and hillside stabilization, and installation of additional shade trees.
- Milestones were provided in Mayor's Initiatives annually as part of progress on project (funding, design and construction)



## Kitsap Lake Park Renovations

- Kitsap Lake improvements include accessible boat launch, pathways, beach access, fishing pier, outdoor shower, reservable shelter, open grass play area, and playground
- Major construction is completed and park is open. Stormwater updates and all new irrigation were recently completed
- The second phase is already underway as funding has been secured for a new playground and installation. The public had a chance to weigh in on the design in the winter. The playground is expected to be installed as a community build in late May or early June of this year.
- Milestones were provided in Mayor's Initiatives annually as part of progress on project (funding, design and construction)



## Quincy Square on 4<sup>th</sup>

- The City has invested in an operations and activation plan through the Downtown Bremerton Association (DBA)
- We have created exemption for certain small events that can be scheduled and coordinated directly with DBA rather than needing a full special events permit
- The City has extended exemption to include food truck events on Fridays
- We are creating standard pre-approved event layouts that will help planners of larger events obtain special event permits more quickly



## Dog Park at Stephenson Canyon

- City working on plan for Park Off-leash Area Dog Park in Stephenson Canyon
- This phased project will establish a safe and accessible off-leash area for the community to use on the eastside of the city to exercise their pets and for socialization
- Seeking funding for Phase 1 to support:
  - Architect/Engineering work for site analysis, grading, drainage, and accessibility.
  - Construction of graded and drained areas, accessible parking, perimeter fencing with designated small and large dog zones, water utilities, and bull-pen entries.
  - Installation of benches, waste stations, signage, and other site furniture
- Additional phases would be funded by other grants, sponsorships, and donations



## Washington Ave Open Air Gallery

- Nearly a dozen new art panels were installed, completing three new gallery walls on Washington Ave.
- The art panel unveiling was celebrated on Monday, February 23 at the outdoor Washington Ave. Open Air Gallery in partnership with the City and the Bremerton Arts Commission
- The new panels add to the existing art panels already in place, expanding access to public art in the downtown area, highlighting the work of local artists and supporting engaging public spaces for residents



## Expanding and Supporting Transportation



## Ferry Access

- Washington State Ferries fully restored service, including the Bremerton route, in June 2025
  - Working with legislators to maintain and increase funding for Washington State Ferries
- Kitsap Transit fast ferries received WA legislative funding to provide full service during the World Cup in 2026, supporting visitors to Bremerton's Fan Zone in Quincy Square this summer!