



MAYOR'S REPORT

April 1, 2026

BREMERTON
WASHINGTON



Government Day Program Update

- Parks and Recreation Director Tim Barker and Human Resources Director Tameka Stewart were provided the opportunity on March 31, through a partnership with Evergreen Goodwill, to highlight their respective departments, share resources and build meaningful relationships that support community development and public awareness.
- This engagement took place as part of the structured “Government Day Program,” led by Dr. Jeneise Briggs, Diversity and Community Engagement Manager
- Students enrolled in Evergreen Goodwill’s work readiness program engaged directly with staff through interactive questions-and-answers session.
- During these conversations, students also shared their aspirations as residents of Bremerton, expressing a strong interest in becoming more involved in volunteerism and exploring opportunities to serve as public servants.



Panda Express Restaurant – 4316 Wheaton Way



What's in the works / project details:

- Demolish old Shari's Restaurant
- Construct new 2,600 square foot restaurant
- New drive-through at rear of building
- New landscaping and street trees along Wheaton Way



Preapproved ADU Program

What's happening now?

Bremerton has the first completed ADU as part of the Countywide pre-approval plan program.

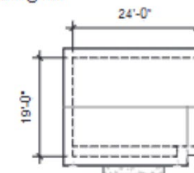
We've had a good interest in this program with 10 permit submittals so far.

Are you interested in building a pre-approved ADU?

- We've got 6 pre-approved plans for your use, free of charge.
- Units range in size from 480 square feet to 1,000 square feet and one that incorporates a garage



SITE PLAN @ 1:20



THE BLAKELY - 800 SF 2-Story ADU

- Approximately 19' x 24' *
- Best suited for 1-4 people
- Roof & window styles can be customized
- 2-Story Unit Layout

Perfect for small lots, the 800SF02-story ADU offers 2 bedrooms, up to 1.5 baths, and numerous customization options. Its efficient layout with an open-concept design and large windows floods the space with natural light making it ideal for both everyday living and entertaining.

* All overall dimensions are to exterior of framing

Bremerton Stormwater Updates

Two large stormwater retrofit projects complete

Francis Street Outfall

- 69.3 acres of drainage captured and treated
- Mainly urban, street, and commercial runoff treated

Kitsap Lake Stormwater Treatment

- 77.3 acres of drainage captured and treated
- Mainly residential and residential street runoff treated



East Narrows Stormwater Management Action Plan Grant

City of Bremerton awarded \$297,400 Grant from the Department of Ecology. Work will start in 2026.

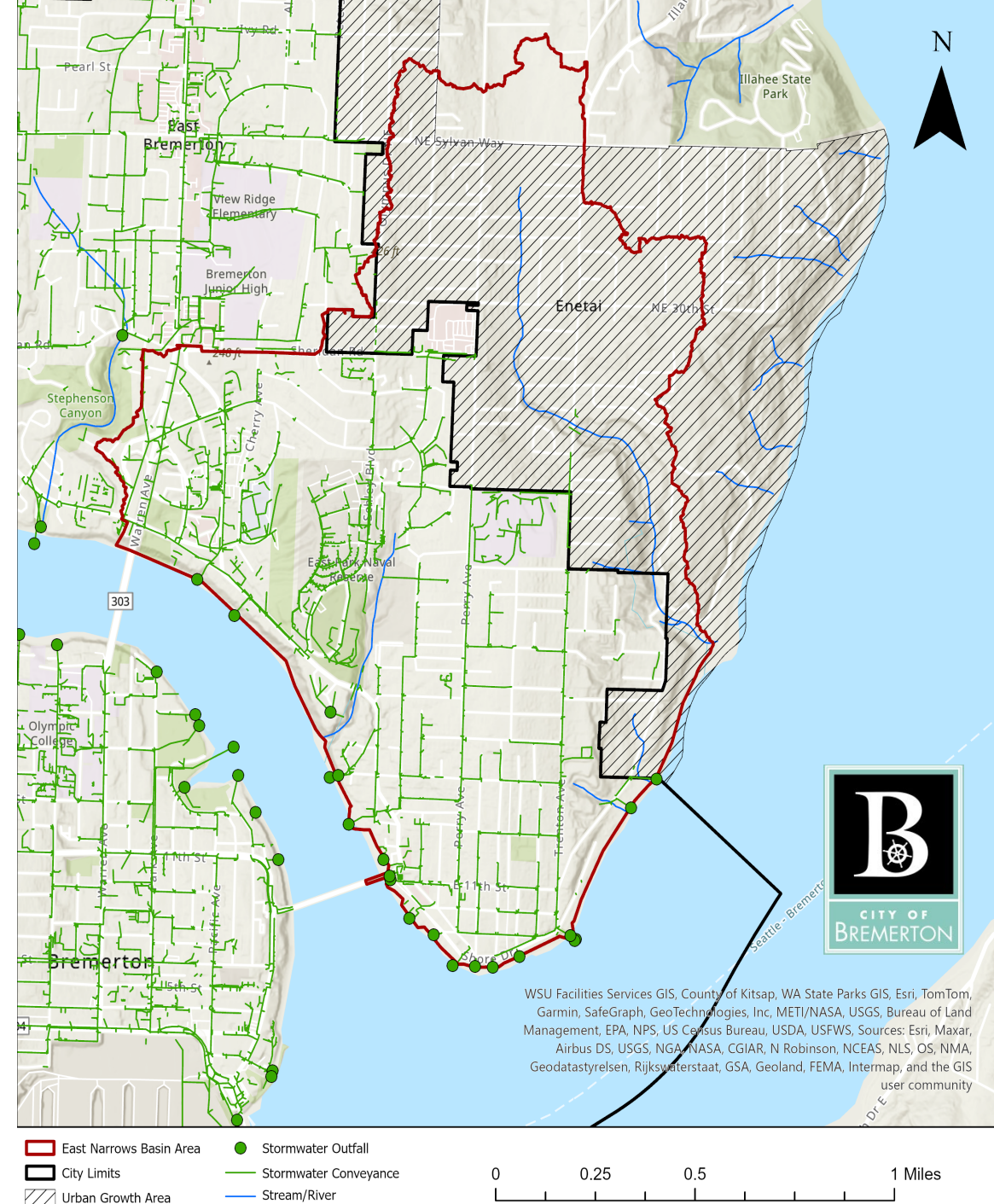
The SMAP process prioritizes areas where targeted management will have the greatest benefit to receiving water quality.

Previous examples of SMAP projects include:

- Basin prioritization
- Action plans for Kitsap Lake and Oyster & Ostrich Bay Basins
- Planned retrofit projects at Francis Street and Oyster Bay

East Narrows Basin ranked as the City's fourth highest priority area for stormwater planning.

- 1,237 acres total
- 64% inside city limits
- 81% previously developed.



Oyster Bay Regional Treatment Facility – Design Grant

\$651,355 Design Grant from the Department of Ecology.
Work would start in 2027.

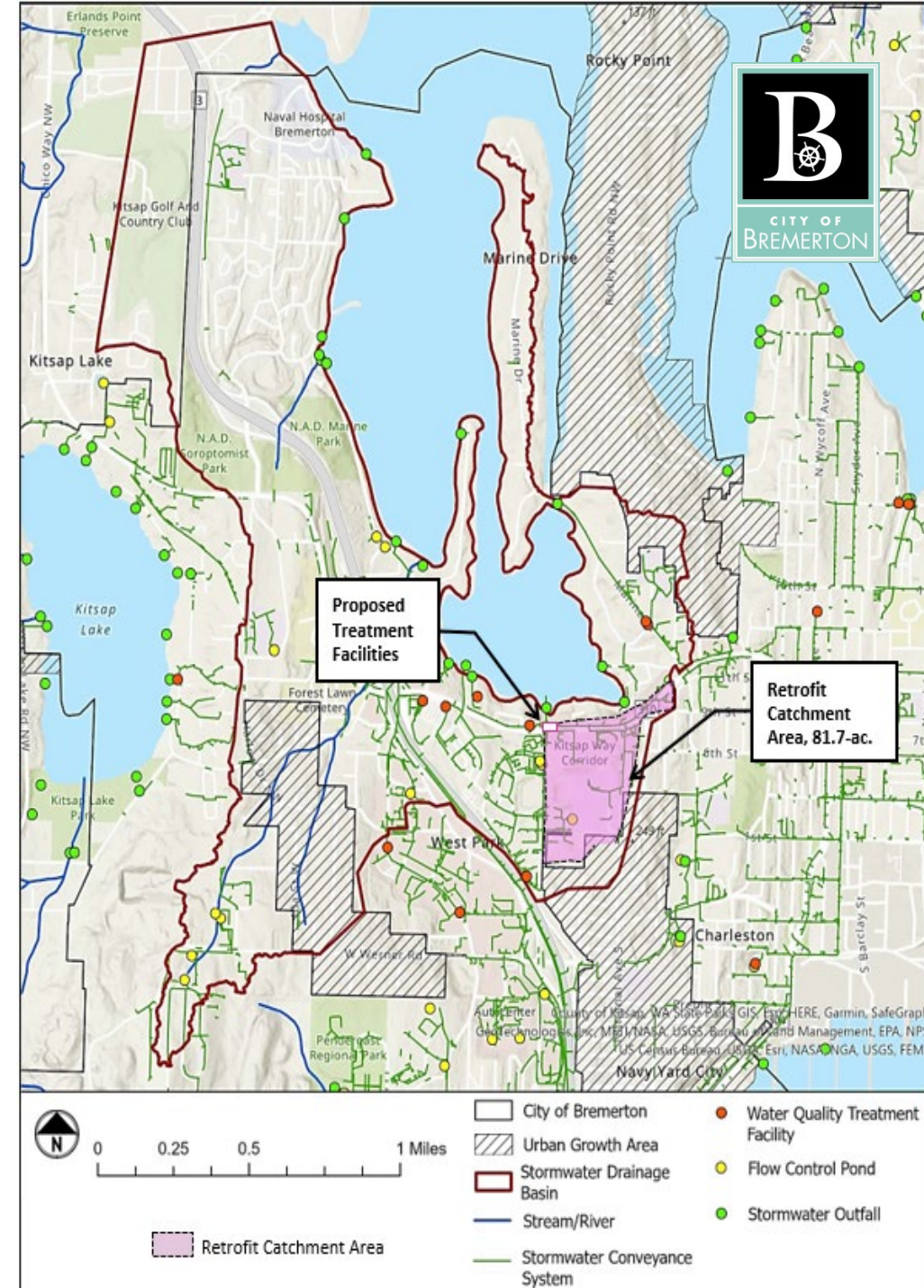
The Oyster Bay stormwater outfall lacks capacity for current stormwater flow.

Project will:

- Evaluate capacity need
- Design updated stormwater outfall
- Design 2 regional treatment facilities to treat 81 acres of roadway and commercial property runoff

Design will be used to apply for Department of Ecology construction grant.

Improvements to water quality is a crucial step in opening shellfish beds for harvest.



Pennsylvania Avenue Stormwater Treatment Facility- Design Grant

\$520,000 Design Grant from the Department of Ecology.
Work would begin in 2027-2028.

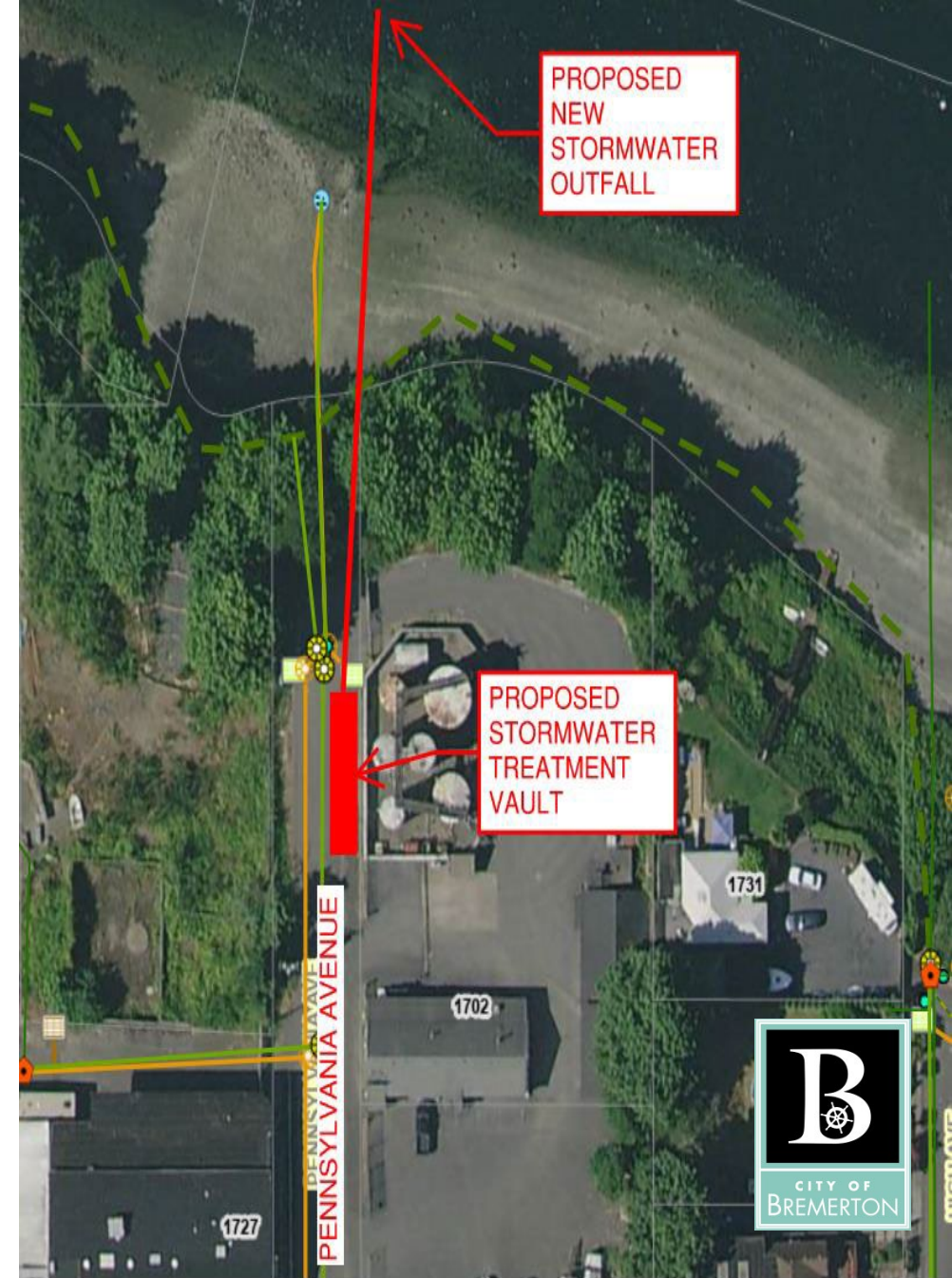
The Pennsylvania stormwater outfall is undersized and requires replacement. During high intensity rain events, stormwater is backing up into the wastewater system causing Combined Sewer Overflows (CSOs).

The design project will result in:

- A new deepwater outfall with capacity for area.
- A regional stormwater treatment facility.
- A reduction of Combined Sewer Overflows at OF-10.
- Will treat runoff from about 40 acres.

Design will be used to apply for Department of Ecology construction grant.

Construction will improve flood mediation, water quality, and protect the shoreline.



PENNSYLVANIA AVENUE STORMWATER TREATMENT FACILITY

1st Street Striping



1st Street looking east



1st Street looking west

Active Transportation Plan and Community Advisors



Active transportation refers to human-scaled methods of travel, such as walking, riding a bike, using a scooter, or rolling with an assistive mobility device such as a wheelchair.



The ATP aims to create a safer, more accessible, and sustainable city for people walking, biking, and rolling. Active transportation will play a crucial role in enhancing mobility, reducing traffic congestion, improving public health, and supporting environmental sustainability.

An advisory group of community members and technical experts will participate in workshops and will help guide the ATP project team.



7 Bremerton residents have been selected to serve as:

Community Advisors

They will:



Form common goals for the ATP



Provide input on ATP network development



Collaborate with project team at each stage of plan development



Provide input on prioritization of proposed projects



Share information with wider community

UW / WSDOT Ferry Rider Survey



W

FERRY RIDER SURVEY



Help Shape Future of Ferry Access



Tell us how you travel to and from the Bremerton Ferry Terminal.

Share your experience to help improve access, mobility options, and connections.

SCAN TO TAKE SURVEY



- Takes **8-10 minutes**
- Chance to win one of ten **\$30 Amazon gift cards**
- Confidential and voluntary

Survey Link:

https://u.washington.edu/qualtrics.com/jfe/form/SV_b2D7UbS41X0T1L8

Survey End Date:

Sunday, May 3, 2026

Kitsap Lake Park Playground Build Day – May 1

- The public is invited to attend the Community Playground Build Day at Kitsap Lake Park on Friday, May 1, beginning at 9 am.
- This event will bring together community volunteers to assist in constructing Bremerton's newest playground, creating an engaging and accessible play space for children and families to enjoy in our community.
- Everyone is invited to join in—no sign-up required. Just show up, lend a hand, and enjoy the fun and sense of community. When the playground opens, participants will be able to proudly say they helped build it.
- Come join in on this exciting milestone for Kitsap Lake Park on May 1!

