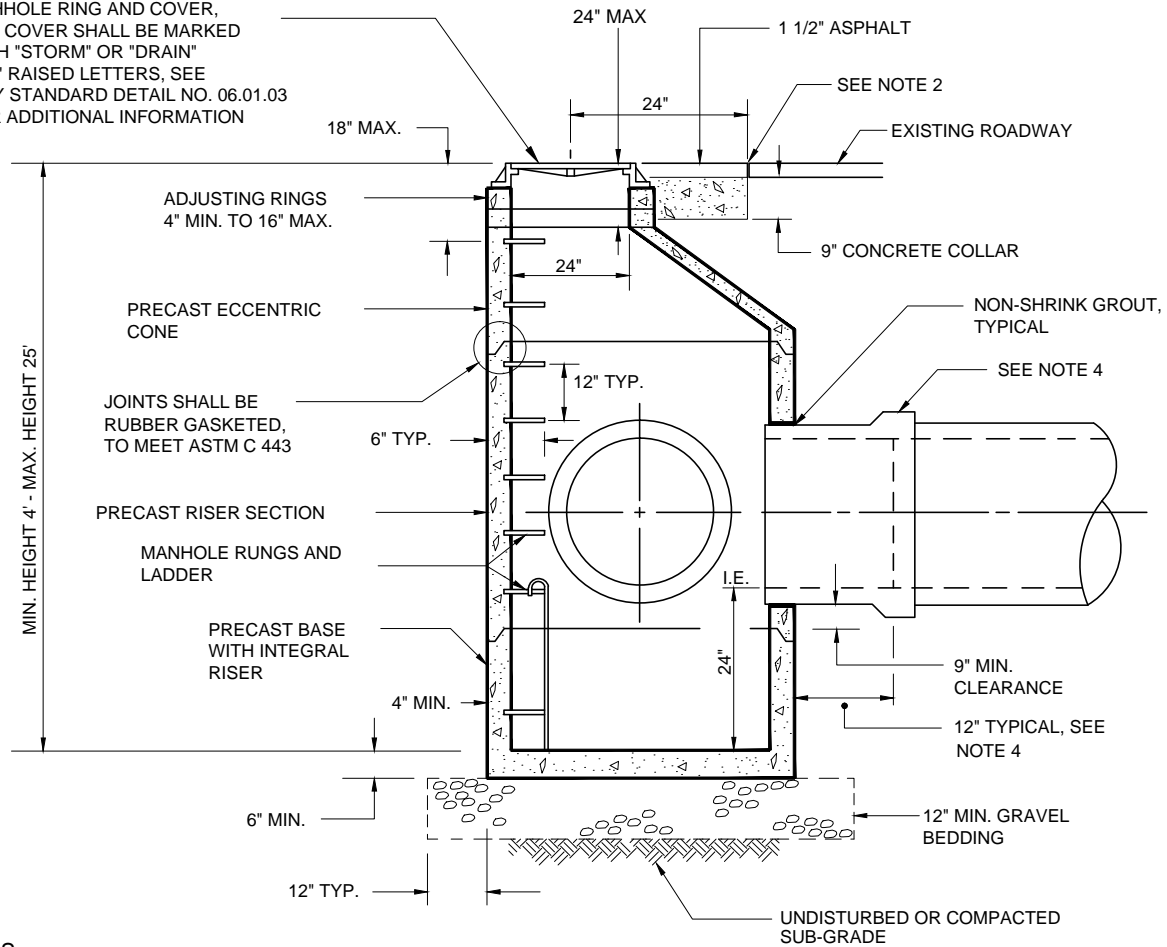


MANHOLE RING AND COVER, THE COVER SHALL BE MARKED WITH "STORM" OR "DRAIN" IN 2" RAISED LETTERS, SEE CITY STANDARD DETAIL NO. 06.01.03 FOR ADDITIONAL INFORMATION



NOTES:

1. THE CONSTRUCTION AND INSTALLATION OF STORM SEWER MANHOLES SHALL CONFORM TO THE REQUIREMENTS OF WSDOT SPEC. SECTION 7-05 AND ASTM C 478
2. PRECAST RISER SECTION OR PRECAST BASE WITH INTEGRAL RISER SHALL BE FURNISHED WITH CUTOUTS OR KNOCKOUTS WITH A MINIMUM WALL THICKNESS OF 2". THE SIZE OF THE KNOCKOUT SHALL BE EQUAL TO THE PIPE OUTER DIAMETER PLUS THE MANHOLE WALL THICKNESS. THE MAXIMUM HOLE SIZE IS 36" FOR A 48" MANHOLE, 42" FOR A 54" MANHOLE, 60" FOR A 72" MANHOLE, AND 84" FOR A 96" MANHOLE.
3. A FLEXIBLE GASKETED JOINT SHALL BE INSTALLED WITHIN 12" OF EACH CONNECTION TO A MANHOLE. THE CONNECTION OF CONCRETE OR DUCTILE IRON PIPE TO A MANHOLE SHALL BE CEMENT MORTARED. DUCTILE IRON PIPE SHALL BE SEALED WITH MASTIC AT THE CONNECTION POINT PRIOR TO BEING MORTARED. UTILIZE A MANHOLE COUPLING (SAND COLLAR) WITH A RUBBER GASKET.
4. THE MANHOLE COVER SHALL BE MARKED WITH "DRAIN" IN 2 INCH RAISED LETTERS. MANHOLE RING AND COVER SHALL CONFORM TO CITY STANDARD DETAIL NO.4020 and 4022.
5. MANHOLE STEP AND LADDER SHALL CONFORM TO CITY STANDARD DETAILS NO. 4030



City of Bremerton

PUBLIC WORKS

DESIGN/CONSTRUCTION STANDARDS

STORM SEWER MANHOLE

Alteration of this drawing is prohibited. Any approval of an altered drawing is unauthorized and void.

4005

Revision Date

12/22/15