

Sewer Discharges

Sanitary Sewer Overflows (SSOs) vs Combined Sewer Overflows (CSOs)

Raw Sewage Spills – Sanitary Sewer Overflows (SSOs)

- SSOs are a release of up to 100% raw sewage from a sanitary sewer
- City of Bremerton has had ZERO raw sewage spills from its systems since Jan 1, 2015 (source: Dept. of Ecology)
- Dept. of Ecology classifies multiple spills at PSNS as raw sewage spills (SSOs)
- Zero SSOs are allowed under state permit

Sewer Discharges

Sanitary Sewer Overflows (SSOs) vs Combined Sewer Overflows (CSOs)

Combined Sewer Overflows (CSOs)

- Bremerton is allowed one CSO discharge per site on a 20-year average under its WA State NPDES permit. City has been - and is currently - in compliance with its permit.
- CSOs are a mix of 1% sewage and 99% rainwater runoff (source: Dept. of Ecology)
- Occurs during extreme and unpredictable rain events

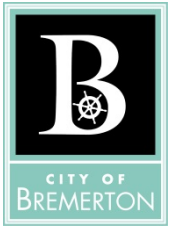
Reduction of CSOs in Bremerton

- Investments have reduced CSOs through collection and pump station improvements. Reductions are described in the annual CSO Report to Ecology.
- City continues to focus on reducing CSOs through maintenance and improvements

Nuisance Property Update

1317 N. Lafayette Ave.

- Received court order to demolish abandoned property under RCW 35.80 Unfit Dwellings.

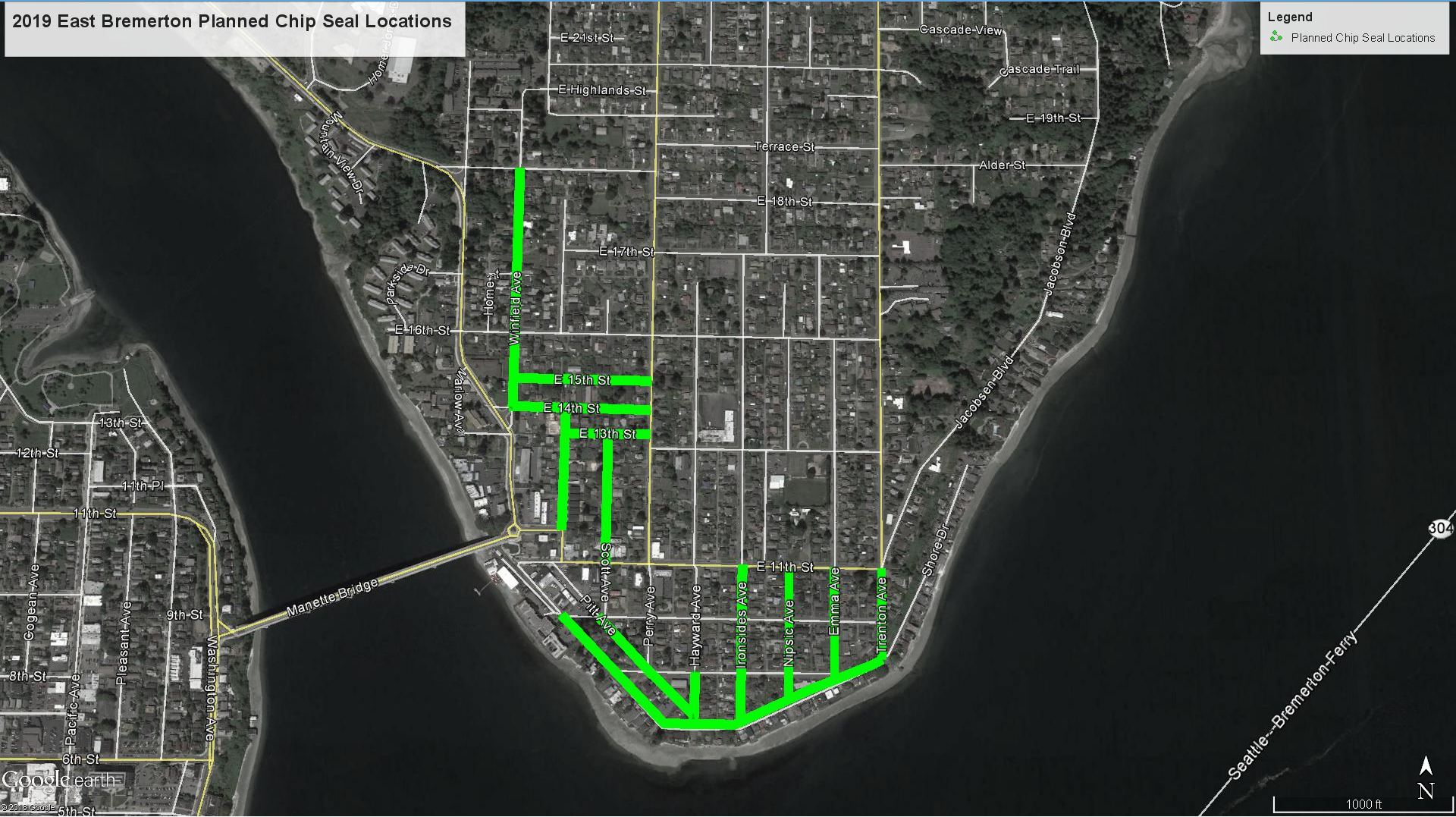




2019 Chip Seal Locations – East Bremerton

2019 East Bremerton Planned Chip Seal Locations

Legend
🟢 Planned Chip Seal Locations



304

Seattle-Bremerton Ferry



1000 ft

Google earth
© 2019 Google



2019 Chip Seal Locations – West Bremerton

2019 West Bremerton Planned Chip Seal Locations

Legend
🟩 Planned Chip Seal Locations





Presentation of Complete Streets Award to Bremerton

ASHLEY PROBART

Executive Director

Transportation Improvement Board



Congratulations!
ZANE ZURBRUGG

Drafted by Milwaukee Brewers
In 2019 Major League Baseball Draft