



City of Bremerton

PUBLIC WORKS

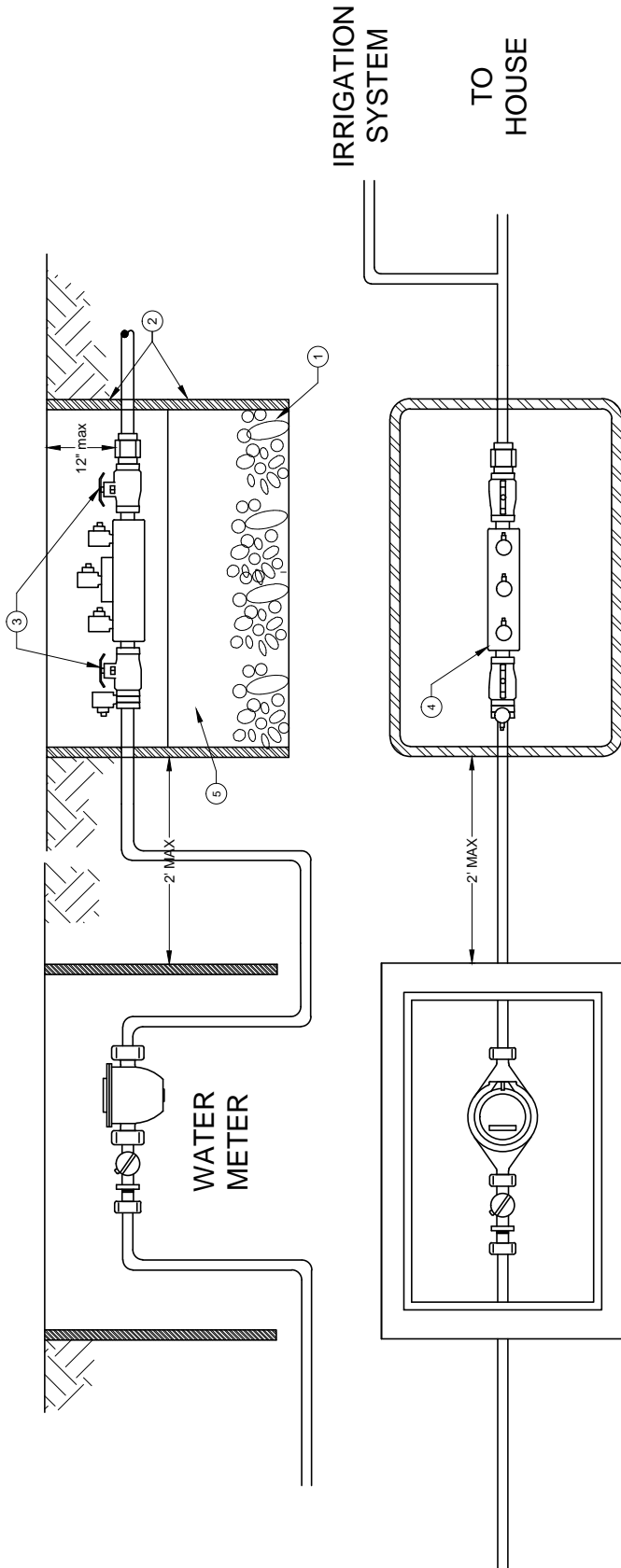
DESIGN/CONSTRUCTION STANDARDS

3/4" TO 2" OUTSIDE INSTALLED
IRRIGATION
DOUBLE CHECK VALVE ASSEMBLY

Alteration of this drawing is prohibited. Any approval of an altered drawing is unauthorized and void.

5041

Revision Date
9/15/14



*INSTALL ACCORDING TO MANUFACTURER'S SPECIFICATIONS

NOTES

1. PLACE PEA GRAVEL 6" DEEP IN BOTTOM OF BOX
2. ENCLOSE 2" AND SMALLER D.C.V.'S IN 2 IRRIGATION BOXES STACKED ON TOP OF EACH OTHER OR IN AN OVERSIZED BOX WHEN NEEDED. BOXES MUST HAVE A REMOVABLE COVER.
3. THERE SHOULD BE A MINIMUM OF 3 INCHES DISTANCE BETWEEN UNDERSIDE OF LID AND HIGHEST POINT OF THE DEVICE
4. WHEN TEST COCKS ARE FACING SIDWAYS, THERE MUST BE 6" OF CLEARANCE BETWEEN THE TEST COCKS AND THE SIDE OF THE BOX.
5. THERE SHOULD BE A MIN OF 3" BETWEEN THE LOWEST POINT OF THE DEVICE AND DRAIN ROCK (PEA GRAVEL).
6. PROVIDE AN EXPANSION TANK AS NEEDED.
7. DEVICE WILL NOT BE FURTHER THAN TWO FEET FROM THE METER WITHOUT PRIOR APPROVAL.
8. (DCVA) WILL BE WASHINGTON STATE D.O.H. APPROVED AND WILL INCLUDE (2) SHUTOFF VALVES, (2) CHECK VALVES AND (4) TEST COCKS WITH PLUGS. ONCE INSTALLED THE (DCVA) WILL BE TESTED BY A CERTIFIED BACK FLOW ASSEMBLY TESTER AND THE RESULTS SENT TO THE CITY CROSS CONNECTION CONTROL SPECIALIST. THEREAFTER INSPECTED AND TESTED ANNUALLY, WHEN MOVED, OR WHEN REPAIRED.
9. ALL OPENINGS IN THE BOX SIDEWALLS WILL BE SEALED TO KEEP DEBRIT OUT.