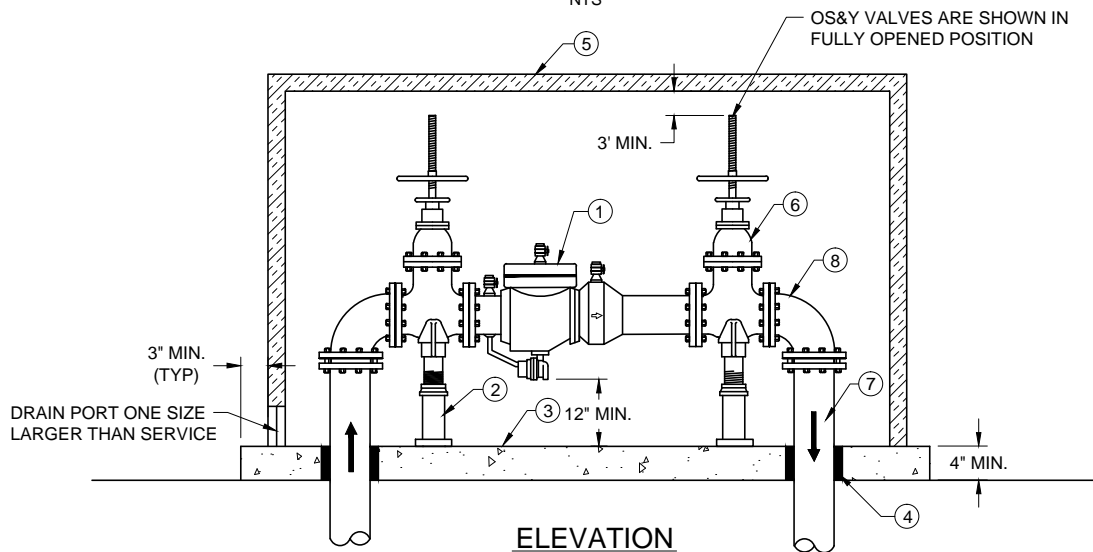


PLAN

NTS



ELEVATION

NTS

MATERIALS:

- ① WASHINGTON STATE D.O.H. APPROVED REDUCED PRESSURE BACKFLOW ASSEMBLY (RPDA).
- ② STEEL, ADJUSTABLE PIPE STANCHION, HOT DIPPED GALVANIZED AS APPROVED BY THE CITY ENGINEER.
- ③ 3,000# PORTLAND CONCRETE SLAB.
- ④ ½" EXPANSION JOINT MATERIAL
- ⑤ INSULATED ENCLOSURE (HOT BOX OR APPROVED EQUAL)
- ⑥ VALVES SHOWN ARE OS&Y BUT MAY BE BUTTERFLY OR NONE RISING STEM AS SUPPLIED BY MANUFACTURER.
- ⑦ CLASS 52 CEMENT LINED DUCTILE IRON PIPE.
- ⑧ 90 DEGREE DUCTILE IRON BEND (FL x MJ) / W MEGA-LUGS
- ⑨ DETECTOR METER

NOTES:

- 1. RPDA TO BE WA. STATE D.O.H. APPROVED ASSEMBLY. ONCE INSTALLED, THE ASSEMBLY MUST BE INSPECTED AND TESTED BY A CERTIFIED BACKFLOW ASSEMBLY TESTER, AND THE WRITTEN TEST RESULTS SENT TO THE CITY CROSS CONNECTION SPECIALIST. THEREAFTER INSPECTED AND TESTED ANNUALLY AND WHEN MOVED OR REPAIRED.
- 2. ALL WORK PERFORMED WILL MEET MANUFACTURER'S RECOMMENDATIONS, CROSS CONNECTION CONTROL STANDARDS, AND MOST RECENT LOCAL AND STATE PLUMBING CODES.
- 3. MEGA-LUGS ARE REQUIRED ON ALL MECHANICAL JOINT (MJ) CONNECTIONS. ADDITIONAL THRUST BLOCKING MAY BE REQUIRED TO RESTRAIN ASSEMBLY. IF SO, THRUST BLOCKING WILL BE DESIGNED BY A LICENSED ENGINEER AND SUBMITTED TO THE CITY FOR REVIEW, PRIOR TO CONSTRUCTION.
- 4. NO CONNECTIONS WILL BE ALLOWED UPSTREAM OF THE DEVICE.
- 5. FROST PROTECTION IS REQUIRED.



City of Bremerton

PUBLIC WORKS

DESIGN/CONSTRUCTION STANDARDS

REDUCED PRESSURE BACKFLOW DETECTOR

ASSEMBLY

2" TO 10" RPBA

ABOVE GROUND INSTALLATION

Alteration of this drawing is prohibited. Any approval of an altered drawing is unauthorized and void.

5044

Revision Date

9/17/14