



**MAYOR'S REPORT**  
*June 16, 2021*

**BREMERTON**  
WASHINGTON



Photo courtesy of Port of Bremerton



# SR 303 Corridor Study

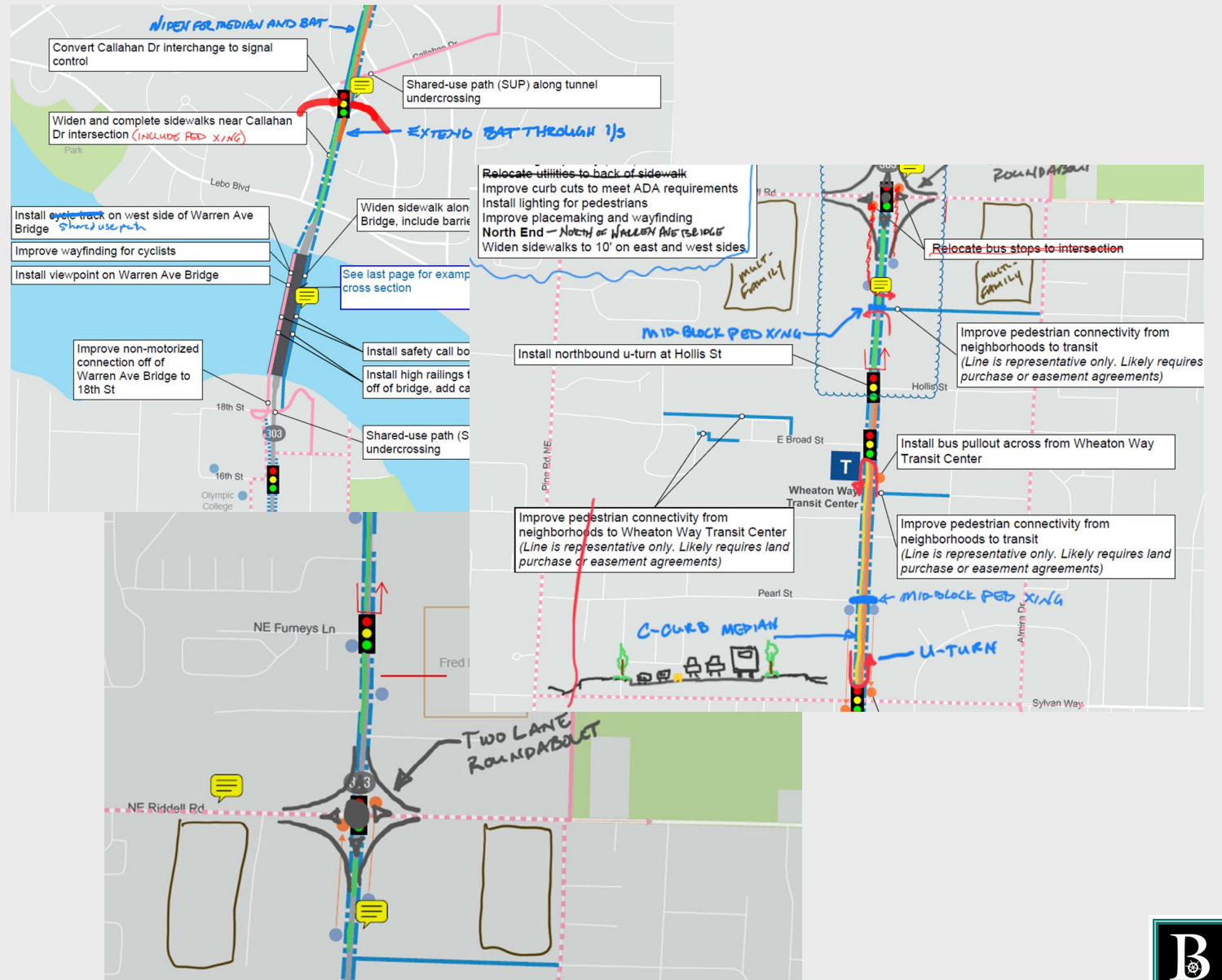
<http://www.bremertonwa.gov/1247/SR-303-Corridor-Plan>



# Major elements of long-term plan

Improve commuter traffic, pedestrian and bike access, and transit for safety, livability and economic growth:

- Intelligent signal technology at traffic signals to manage commuter traffic surges and local growth.
- Roundabouts at key locations where they make a significant contribution to traffic operations, pedestrian accessibility, and safety.
- 10 foot sidewalks with landscaped buffer north of the Warren Avenue bridge.
- More amenities for active transportation including mid-block pedestrian crossings, and bike facilities adjacent to the corridor.
- Median control for corridor north of bridge.



# Plan Implementation:

- The plan elements were broken down into projects that were then organized by priority.
- **Early and mid phases address immediate needs** for the corridor like signal timing and pedestrian improvements.
- **Later phases include capacity and transit projects** that will be needed as the area grows.

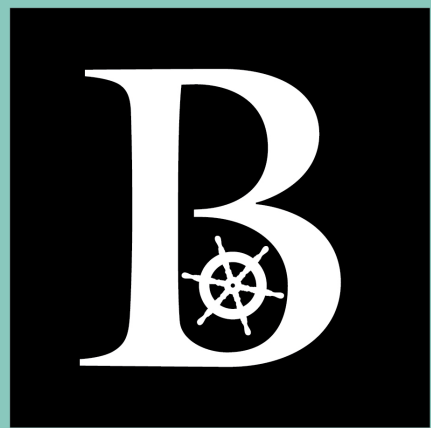
## Next Steps:

- The City sought funding from 2021 legislature for intelligent signal technology for traffic management but did not receive funding this year; will continue to pursue funding sources
- The City has received funding to design pedestrian improvements to the Warren Avenue Bridge and will pursue funding for project construction.
- The City will pursue other funding resources for early and mid phases; plan for resources for future phases.

Phase	Location	Project Description
1A	Segment 1 – 4	Adaptative signal technology at signalized intersections, reconfiguration of Burwell Street intersection.
1B	Warren Avenue Bridge	Roadway and sidewalk improvement across the bridge, sidewalk and active transportation improvements south and north of the bridge
1C	Off corridor	Bicycle facilities on Almira Drive
1D	Segment 1 – 5	Develop a corridor schematic between Burwell Street and NE Riddell Road using updated survey data
2A	Segment 3	Mid-block crossing at Dibb Street
2B	Segment 1	Mid-block crossing between 6th Street and 11th Street
2C	Segment 3	Mid-block crossing at Pearl Street
2D	Segment 3	Mid-block crossing between Hollis Street and NE Riddell Road
3A	Segment 2	Active transportation facilities between Warren Avenue Bridge and Sheridan Road
3B	Segment 3	Median, channelization, and signing improvements between Sheridan Road and Sylvan Way
3C	Segment 3	Median, channelization, and signing improvements between Sylvan Way and Hollis Street
4A	Segment 1	Median, channelization, and signing improvements between Burwell Street and 6th Street
4B	Segment 1	Roundabout at 11th Street
5	Off corridor	Bicycle facilities on Callahan Drive and Cherry Avenue/Almira Drive, sidewalks connecting SR 303 to neighborhoods
6	Segment 1	Channelization, sidewalk, and transit improvements between 13th Street and Warren Avenue Bridge
7	Segment 3	BAT lane and sidewalk improvements between Sheridan Road and Sylvan Way
8A	Segment 1	Sidewalk improvements between Burwell Street and 13th Street
8B	Segment 3	BAT lane and sidewalk improvements between Sylvan Way and NE Riddell Road
9A	Segment 2	Roundabout and active transportation facilities at Callahan Drive, BAT lane between Warren Avenue Bridge and Sheridan Road
9B	Segment 3	Roundabout at NE Riddell Road
10	Off corridor	Active transportation undercrossing and facilities south of the Warren Avenue Bridge and through Olympic College



**The full plan may be viewed on our website:**  
**<http://www.bremertonwa.gov/SR-303-Corridor-Plan>**



CITY OF  
BREMERTON

# Joint Compatibility Transportation Plan

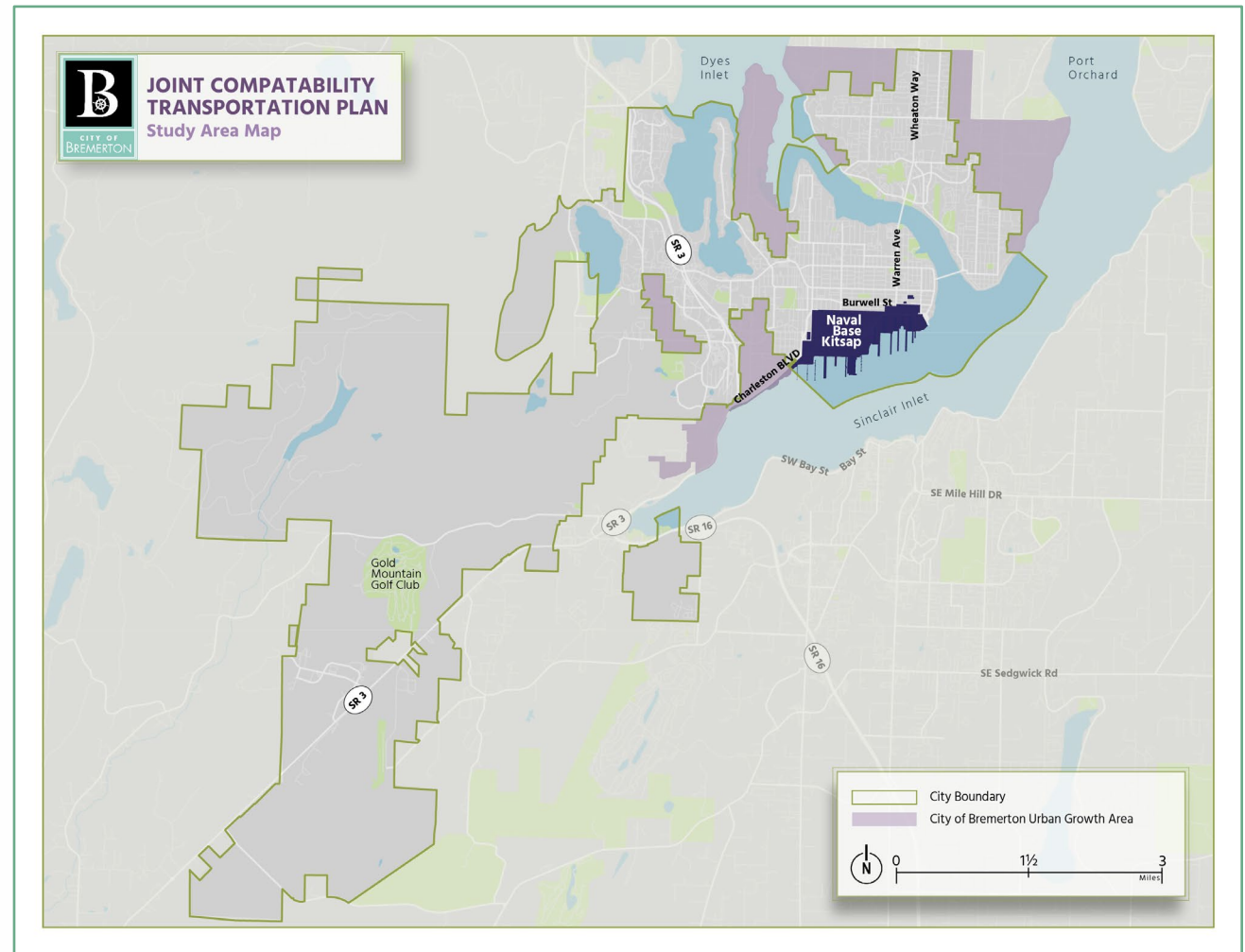
# Project Overview

Bremerton has unique traffic and parking issues due to Naval Base Kitsap - Bremerton (NBK-BR), such as:

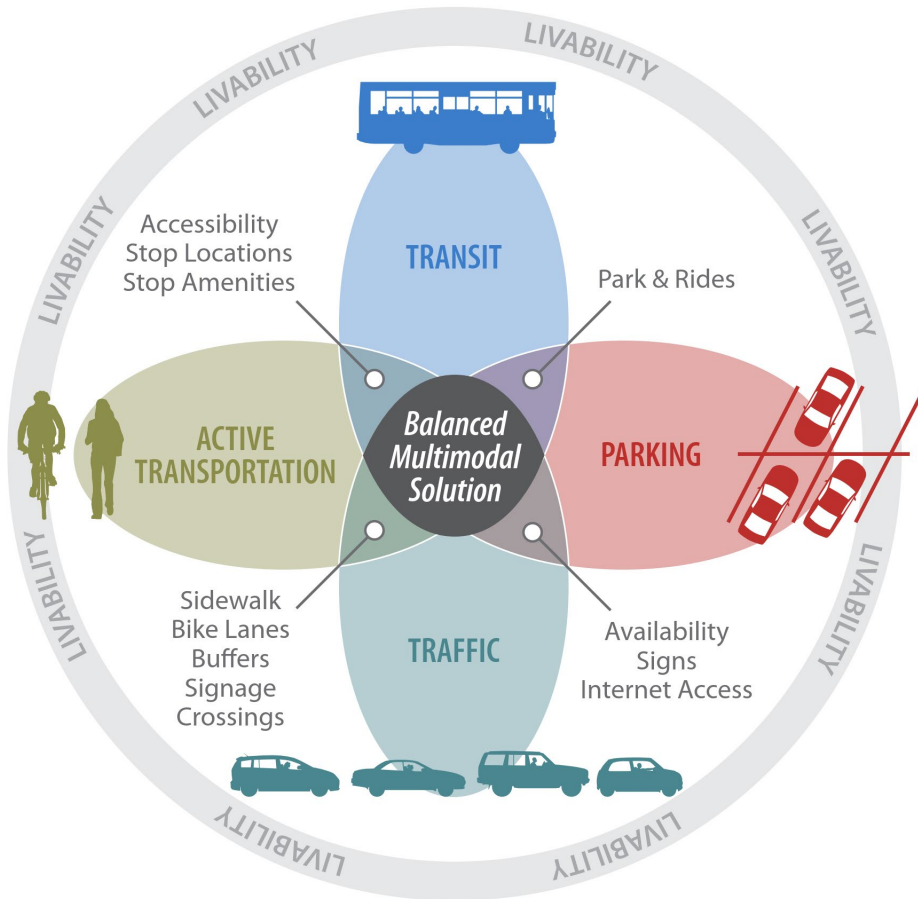
- traffic surges at shift changes
- limited parking both inside and outside fence line
- older infrastructure that is car focused
- forecasted population growth

City and NBK-BR are partnering through a U.S. Dept. of Defense grant to create a plan that will address these challenges

- \$750,000 Project
- 18-month study period



# Project Goals



- Examine existing and future need for all transportation modes serving NBK-BR
- Develop solutions to resolve deficits
- Evaluate options to mitigate transportation and parking demands
- Develop a prioritized implementation plan



# More Information

**Katie Ketterer**

**City of Bremerton Project Manager**

**360-473-5334**

**[Katie.Ketterer@ci.bremerton.wa.us](mailto:Katie.Ketterer@ci.bremerton.wa.us)**

**[www.bremertonwa.gov/jctp](http://www.bremertonwa.gov/jctp)**





# City of Bremerton New Business Applications

	2021	2020	2019
January	44	67	60
February	37	63	33
March	45	43	74
April	47	27	36
May	40	32	54
June		40	36
July		37	63
August		39	59
September		28	56
October		72	52
November		30	45
December		29	44
<b>TOTAL</b>	<b>213</b>	<b>507</b>	<b>612</b>

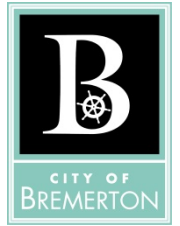




# City of Bremerton Business Closures

	2021	2020	2019
January	59	91	124
February	38	38	75
March	11	24	15
April	61	18	20
May	147	61	25
June		5	28
July		10	28
August		6	37
September		265	51
October		16	33
November		37	17
December		58	90
<b>TOTAL</b>	<b>316</b>	<b>629</b>	<b>543</b>





# City of Bremerton Business Assistance

We recently provided funding to the Kitsap Small Business Development Center (SBDC) operated in conjunction with Western Washington University to support and help Bremerton's new and existing businesses. They provide:

**Marketing Assistance**  
**Strategic Planning**  
**Business Counseling and Advice**  
**Start-up Support**

## Industries Served

Accommodation & Food Services  
Agriculture, Forestry, Fishing & Hunting  
Arts & Entertainment  
Construction  
Educational Services  
Health Care & Social Assistance  
Manufacturing & Producing  
Professional, Scientific & Technical Services  
Service Establishments  
Retail Trade  
Technology Services

## SBDC Contact:

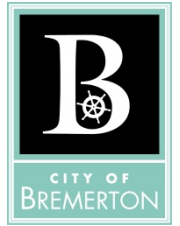
Jaime Forsyth, Certified Business Advisor  
WWU Small Business Development Center  
700 NE Lincoln Rd, Poulsbo, WA 98370  
[kitsapsbdc@wwu.edu](mailto:kitsapsbdc@wwu.edu) | (360) 447-8788



# Permit Activity – May 2014-2021

■ 2014 ■ 2015 ■ 2016 ■ 2017 ■ 2018 ■ 2019 ■ 2020 ■ 2021





## Permits Approved by Year 2016-2021

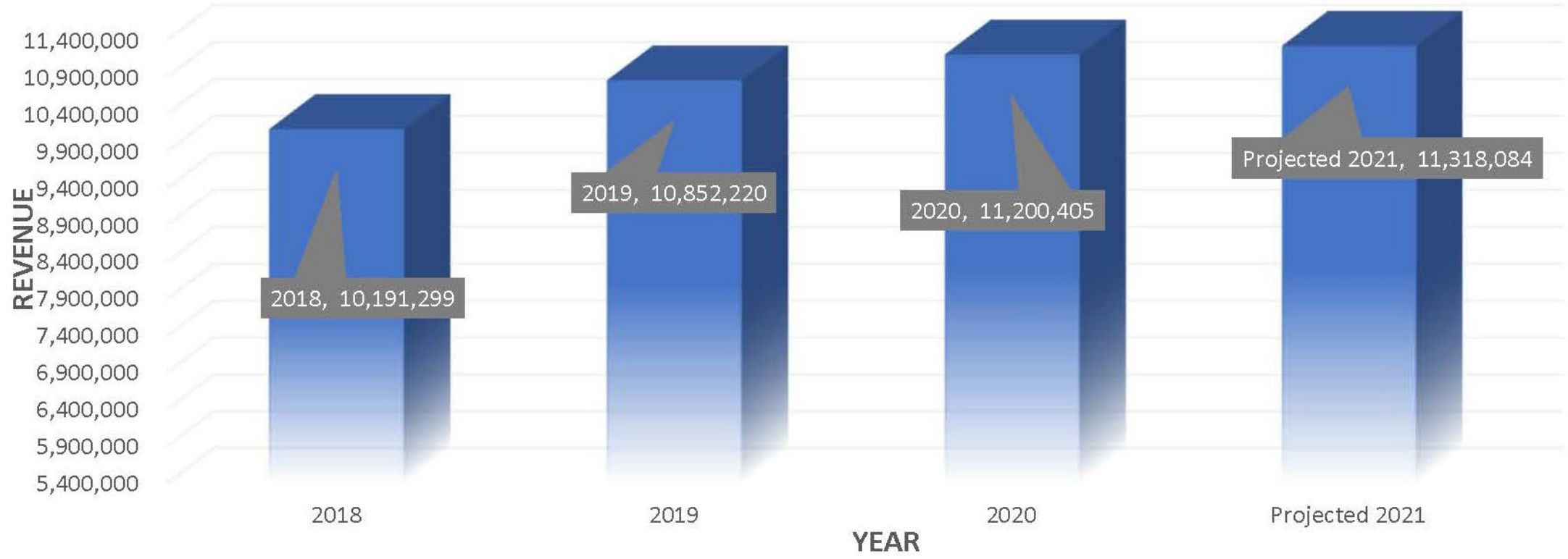
Year	# of Permits	Total Valuations
2016	870	\$53,476,252
2017	929	\$51,297,918
2018	1238	\$79,461,508
2019	1204	\$128,301,690
2020	1265	\$143,423,389
2021	745	\$75,658,083 *
* Permits through May 31, 2021		

**\$75,658,083** (Total Approved) +  
**\$90,057,815** (Pending) =  
**\$165,715, 898** in the Queue

Construction is valued at just under \$166 million for both permits already approved and in the review queue. We're more than half way to last year's total with still a lot of permits in the queue, putting us more than \$22 million over last year.

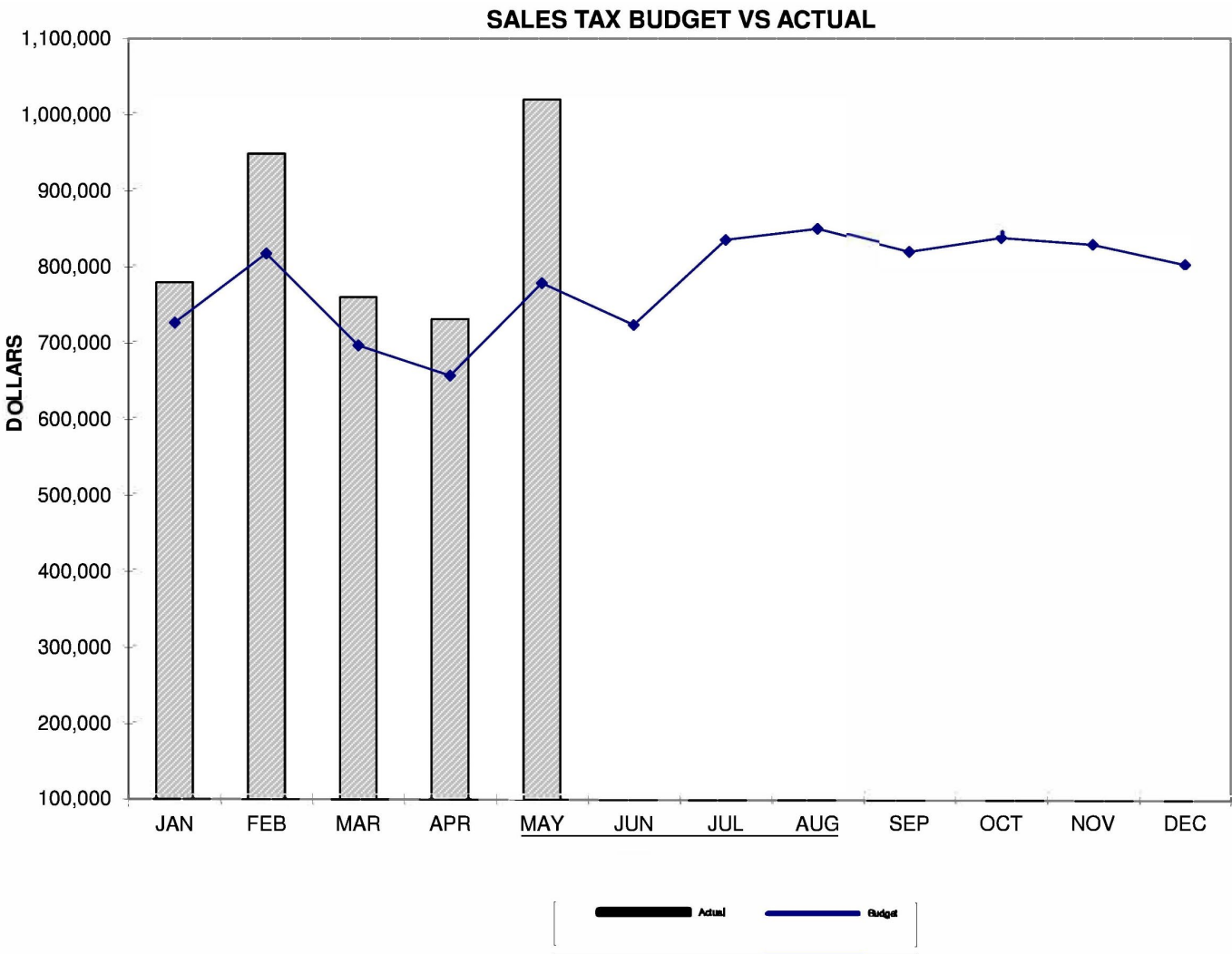


# Sales Tax Trends





# 2021 Sales Tax Report



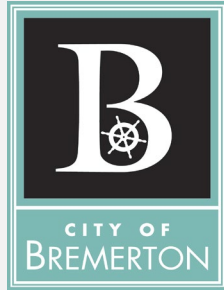
In 2021, we are currently (through May) out performing budget by \$563,067.



## Downtown Business and Employee Parking Survey July 2021

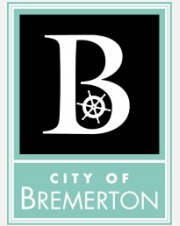
1. Is your business physically located between Burwell Street and 11<sup>th</sup> Street and between Washington Avenue and Warren Avenue?
2. Does your business require physical interaction with customers?
  - a. If so what percentage of your business operations require physical interaction with customers?

10-25%	25-50%	50-75%	75-100%
--------	--------	--------	---------
3. Do you currently use the 405 Washington Avenue Garage at the Downtown Business and Employee Parking rate?
  - a. If not, why not?
4. What are your business hours?
5. How many employees do you have?
6. How many of your employees need off-site parking?



## Downtown Business and Employee Parking Survey July 2021

6. How many of your employees need off-site parking?
7. Do your employees telework?
  - a. If so, how many?
8. Do any of your employees' ride share?
  - a. If so, how many?
9. Do any of your employees take the bus?
  - a. If so, how many?
10. How far would your employees be willing and able to walk from their parking to place of employment?  
Choose one of the below options:  
1 block 2 blocks 3 blocks 4 blocks 5 blocks
11. Is there anything else that you would like to share regarding your business parking needs?



**Do you have more questions? Comments? Or would like to suggest a question for the survey?**

**Please contact the City of Bremerton Parking Program Manager**

**Melinda Monroe, phone: 360-473-5306 email:**

**[melinda.monroe@ci.bremerton.wa.us](mailto:melinda.monroe@ci.bremerton.wa.us)**

**THANK YOU!**

## Quincy Square Update

The City of Bremerton brought the Quincy Square proposal to Congress and we've asked for federal funding to complete the project before the end of 2022.

Rep. Derek Kilmer requested the funding for Quincy Square. We're looking forward to working with him and Senators Murray and Cantwell to bring this project across the finish line.





# EMERGENCY BROADBAND BENEFIT

HELPING HOUSEHOLDS CONNECT DURING THE PANDEMIC



## What is it?

A temporary FCC program to help households struggling to afford internet service during the pandemic.

### The benefit provides:

- Up to \$50/month discount for broadband service;
- Up to \$75/month discount for households on qualifying Tribal lands; and
- A one-time discount of up to \$100 for a laptop, desktop computer, or tablet purchased through a participating provider.



## Who is eligible?

A household is eligible if one member of the household:

- Has an income that is at or below 135% of the Federal Poverty Guidelines or participates in certain government assistance programs;
- Receives benefits under the free and reduced-price school lunch or breakfast program;
- Received a Federal Pell Grant during the current award year;
- Experienced a substantial loss of income due to job loss or furlough since February 29, 2020; or
- Meets the eligibility criteria for a participating provider's existing low-income or COVID-19 program.

## THREE WAYS TO APPLY

### 1 Contact your Preferred Participating Provider Directly

Ask your provider if they participate in the EBB, or use our online tool to find a participating company near you.



### 2 Online

Use the online application at [GetEmergencyBroadband.org](http://GetEmergencyBroadband.org)

### 3 By Mail

Print an application in English or Spanish. Complete the application and send with proof of eligibility to:

Emergency Broadband Support Center  
P.O. Box 7081  
London, KY 40742



For additional information, Call 833-511-0311, or visit [fcc.gov/broadbandbenefit](http://fcc.gov/broadbandbenefit)

# BENEFICIO DE EMERGENCIA PARA INTERNET (EBB)

AYUDANDO A LOS HOGARES A MANTENERSE CONECTADOS DURANTE LA PANDEMIA



## ¿QUÉ ES?

Es un programa temporal de la FCC que ofrece ayuda a los hogares con problemas para pagar sus servicios de Internet durante la pandemia.

### Este beneficio te proporciona:

- Máximo \$50 de descuento al mes para tu servicio de Internet.
- Máximo \$75 de descuento al mes para hogares elegibles en Territorios Tribales.
- Un descuento único de hasta \$100 por una computadora portátil, computadora de escritorio o una tableta electrónica a través de un proveedor participante.



## ¿Quién es elegible?

Podrás participar en este programa si un miembro de tu hogar:

- Tiene un ingreso igual o menor al 135% del nivel federal de pobreza o participa en ciertos programas de asistencia social.
- Recibe beneficios en la escuela bajo el programa de almuerzo o desayuno gratuito o reducido.
- Recibió una beca Federal Pell Grant para la Universidad durante el año en curso.
- Experimentó una pérdida sustancial de ingresos debido a la pérdida de su empleo o a la suspensión de su trabajo, sin sueldo, desde el 29 de febrero de 2020.
- Cumple con los criterios de elegibilidad exigidos por un proveedor participante en un programa de bajos ingresos o en un programa COVID-19 ya existente.

## TRES FORMAS DE SOLICITAR EL BENEFICIO:

### 1 Contacta a tu proveedor de Internet preferido directamente.

Pregunta si participa en el programa EBB o utiliza nuestros servicios en línea para encontrar una empresa participante en tu localidad.



### 2 En línea

Usa la solicitud en el sitio web: [GetEmergencyBroadband.org](http://GetEmergencyBroadband.org)

### 3 Por correo

Imprime la solicitud en inglés o español. Complétala y envíala con tu comprobante de elegibilidad a:

Emergency Broadband Support Center  
P.O. Box 7081  
London, KY 40742



Para obtener más información, llama al 833-511-0311 o visita [fcc.gov/bandaanchaprestacion](http://fcc.gov/bandaanchaprestacion)

# COVID Bill Assistance Program

The COVID Bill Assistance Program is a Puget Sound Energy program created to help residential customers facing financial hardship due to COVID-19. This program allows customers to receive:

- Up to \$2,500 in additional utility bill payment assistance.
- Up to \$2,500 to forgive past balances for customers who received energy assistance in the past.
- Extended payment plans up to 18 months.
- The option to change their energy bill's due date.

## Who can qualify for the COVID Bill Assistance Program?

- Customers qualify based on their income. Please see the table for income requirements.
- Go to [pse.com/covidhelp](http://pse.com/covidhelp) to learn more about income requirements.

## How can customers apply for the program?

1. By visiting [pse.com/assistance](http://pse.com/assistance)
2. Providing a photo ID and the necessary income documentation.
  - Documentation varies depending on the customer situation. Documents may include bank statements, pay stubs, award letters, etc.
3. Completing the application form

## What other measures is PSE offering to help customers in need of assistance?

In addition to the COVID Bill Assistance Program, PSE also offers payment plans and allows customers to change their bill's due date. Although this program is for residential customers, PSE is offering businesses the option for extended payments.

## Income Table

Number of Persons in Household	Maximum Monthly Net Income Limit
1	\$2,147
2	\$2,903
3	\$3,660
4	\$4,417
5	\$5,173
6	\$5,930
7	\$6,687
8	\$7,443
9	\$8,200
10	\$8,957

[pse.com/assistance](http://pse.com/assistance)

