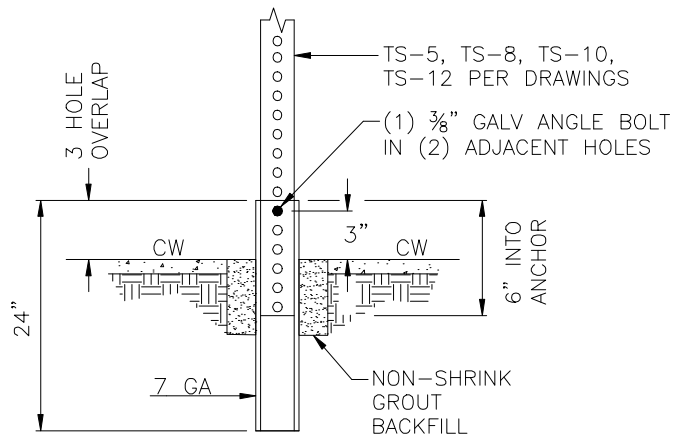


LIGHT DUTY ANCHOR
(OUTSIDE OF SIDEWALK AREA)



HEAVY DUTY ANCHOR
(SIDEWALK APPLICATION & AS NOTED BY ENGINEER)

POST ANCHOR INSTALLATIONS



City of Bremerton

PUBLIC WORKS

ENGINEERING DIVISION

TYPICAL SIGN INSTALLATION

Alteration of this drawing is prohibited. Any approval of an altered drawing is unauthorized and void.

3251

Revision Date
10/12/12